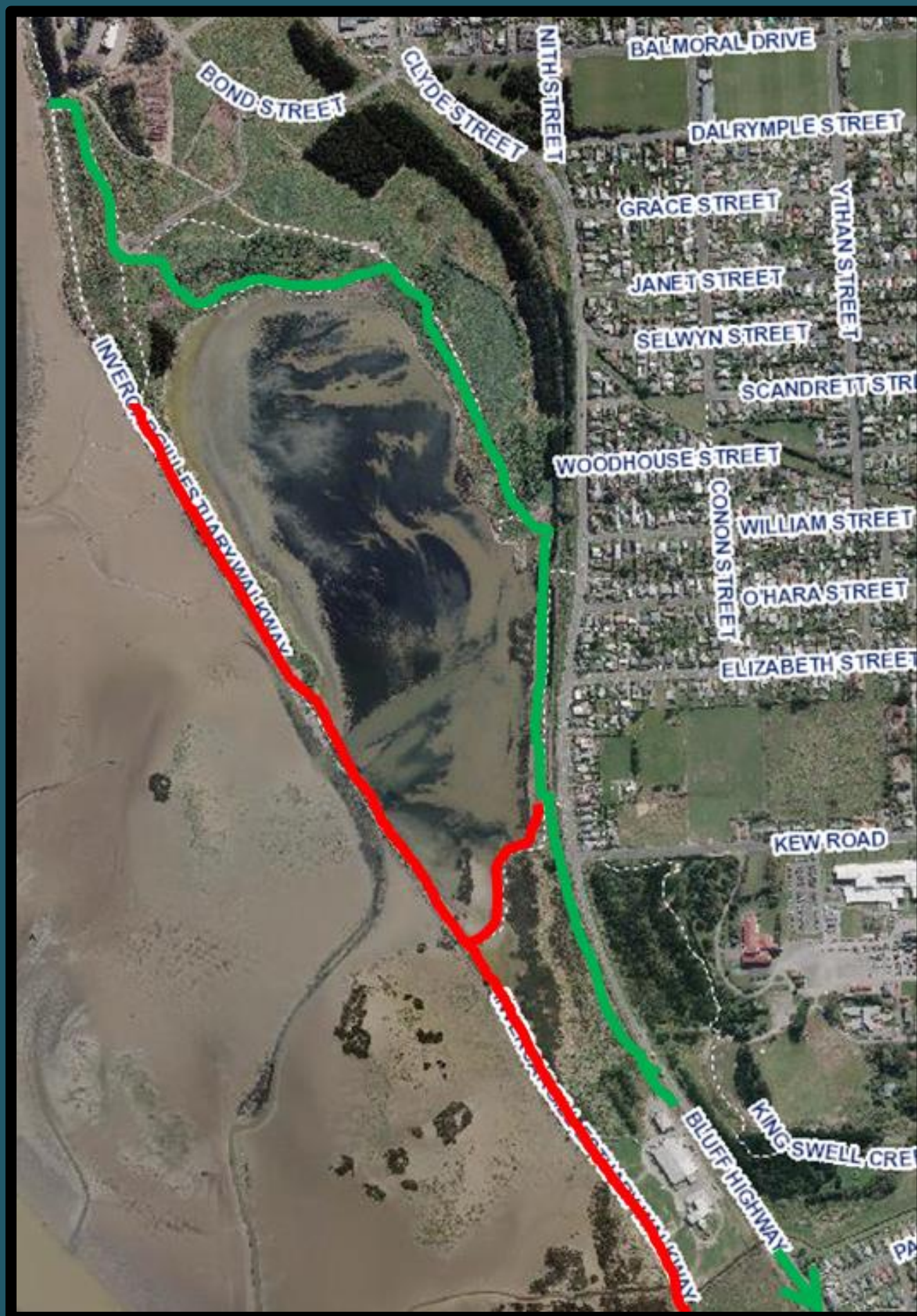


# Bridge and Boardwalk Closure

Due to a severe weather event, both the Estuary Walkway Bridge and Boardwalk have sustained major structural damage. Due to safety concerns both are closed until further notice. An alternate route is indicated in green. We apologise for any inconvenience and thank you for your understanding during this time. — Closed — Alternate Route



For more information please contact Invercargill City Council Parks Division on (03) 219 9070, email [parks@icc.govt.nz](mailto:parks@icc.govt.nz) or go to [www.icc.govt.nz](http://www.icc.govt.nz)