

Changes to Total Mobility scheme take effect this weekend

Changes to the Total Mobility scheme will result in easier travel for clients and improved efficiency for transport operators from this weekend.

TOTAL MOBILITY is a nationwide scheme that provides subsidised transport to people with impairments. The Invercargill City Council administers the scheme in Southland on behalf of Invercargill City, Gore District, and Southland District councils.

The scheme provides discounted fares for transport, and is available to people who have a physical, sensory, intellectual, neurological or psychological impairment and are unable to access transport without help or assistance.

The Total Mobility scheme for Southland will change from Sunday, 1 July, with the introduction of a new Ridewise swipe card. This new card will replace an old sticker system.

Invercargill City Council Roading Manager Russell Pearson said the new Ridewise card would make accessing the Total Mobility scheme subsidies simpler for clients, and improve efficiency for the transport operators.

Until now, clients were annually sent stickers in the post to be able to access subsidies from the transport operators.

“Stickers involved a lot of administration, were often misplaced or lost, and there was no way for transport operators to confirm the person who had the stickers were entitled to the subsidies,” Mr Pearson said.

“The new card has a personalised photograph printed on it, which will enable the operator to confirm the person holding the card is eligible for subsidised travel, and has an expiry date of five years. This card will resolve many of the issues we presently have with the sticker system.

“It won’t get damaged in handbags or wallets and people are now much more familiar with the use of swipe cards.

“Hopefully it will be a helpful ID card for clients.”



Council staff have been in close communication with both current clients and transport operators, have received more than 1000 photographs to be printed on the cards, and will be sending out the new cards this week.

“We have appreciated all the help and efforts of the individuals and families who have arranged this, along with support from local agencies who have contacted their clients and assisted,” Mr Pearson said.

“It’s been a busy time but we’ve been fortunate for the support received.”

For most clients, the scheme offers half-price fares for transport, up to a maximum subsidy of \$25 per one-way ride. There is presently no limit on how often the subsidy can be used. The person travelling still needs to pay for the remaining 50 per cent of the travel cost at the end of the journey.

In Invercargill, the same transport operators will continue to offer the scheme and are ready to start swiping Ridewise cards on Sunday.

In Gore, there is a new transport operator – Ezicab Gore – that will offer the subsidised Total Mobility scheme with the new Ridewise swipe card. The previous provider will not continue to offer subsidies under the scheme.

More information on the Total Mobility scheme, including how to apply and a list of transport operators, is available on council’s website: www.icc.govt.nz/community/total-mobility/.



Cheryl in the spotlight

Records Team Leader and accomplished singer Cheryl Anderson sang the New Zealand national anthem at the game between the Highlanders and the French Barbarians at Rugby Park on Friday night. The game was broadcast live on Sky television.

IT isn't the first time Ms Anderson has been involved in singing national anthems for international sports fixtures. In 2013 she sang the Japanese national anthem for the Great Mayoral Rugby Challenge for the 20th

anniversary of our sister city relationship, and in 2017 she sang God Save the Queen at the international Netball Quad Series games at Stadium Southland.



The language of friendship

ICC Communications Manager Eirwen Harris Mitchell has won second place in a writing competition for foreigners visiting Jiangsu Province, China.

EIRWEN wrote an article called "Embracing the culture and the smiles" for Council's Noticeboard in The Southland Times and the Suqian Government asked her to enter it in the competition.

The article has been published in a book called Portraying Jiangsu from a different angle, which

was sponsored by the Jiangsu Provincial People's Association for Friendship with Foreign Countries and the Xinhua Daily Media Group.

Jiangsu is a province of 80 million people, including residents of our sister city Suqian.



Earthquake-prone building training for staff and engineers

Council's staff and local engineers last week underwent training from the Ministry of Business, Innovation and Employment (MBIE).

DAVE BRUNSDON, a consultant engineer from MBIE, took two training sessions in Invercargill.

The training was on the use of earthquake methodology documents and reporting templates that engineers should be using when they check buildings, so that they can provide clear advice to Council staff.

Engineers will be informing staff on whether a building is earthquake-prone and what the terms 'critical structural weakness' and 'mode of failure' actually mean for that particular building.

Other local councils were invited to send staff to learn more about the new documents and they came from

as far away as Dunedin. Fifteen people attended the afternoon session and fourteen attended the evening session for engineers.

Simon Tonkin, the Council's Development Liaison Manager, advised the engineers about Council's priority building area process and when inspections would begin.

It is important that the local engineers are aware of the process and time frames that staff are following so that they can provide the best possible advice to their clients.

"We are all on the same journey and the more we share information the better off we will all be," Mr Tonkin said.

Animal Services update

THE Animal Services team has been working towards providing Council with options following the Independent Advisory Panel's recommendations.

There have been many dogs which have not been claimed from the Animal Care Facility while plans are being developed, so alternative options for making sure these dogs are safe to re-enter the community have been considered and implemented as an interim option.

As a result of this, seven dogs that were unclaimed from the Animal

Care Facility have been accepted for rehoming by reputable organisations outside of Invercargill.

While this is not a long-term solution, the Animal Services team has been grateful for the support from these organisations, some from as far away as Christchurch.



What makes us Southlanders?

A youth perspective...

'The friendly people.'

'Feeling I belong.'

'Cool things like the stadium.'

June 2018 grant funding

THE following grants have been allocated in the June 2018 funding round for Invercargill Active Communities and Creative Communities Invercargill:

- Invercargill Active Communities Fund**
- Makarewa Squash Club - \$1400 for training volunteer coaches and junior players.
- Creative Communities Invercargill**
- James Hargest College Kamiti Hemi Hakano - \$2260 for workshops and weaving of a korowai
 - Invercargill Rock n Roll Club - \$1000 for workshops for members
 - Te Taonga Mauri - \$1000 for the installation of a Matariki exhibition

The next funding rounds close on 28 September 2018, with the under \$1000 applications considered for the Active Communities fund on 15th of each month.

Welcoming Communities

With the focus on Welcoming Communities, we thought we'd ask ICC staff members who have moved to Invercargill from other countries to share their experiences.

This is the first in the series:

Name: Saniya Thompson

Nationality: Russian

Why did you come to Invercargill?

I moved to Invercargill for love. I was born and raised in Moscow and never even considered living anywhere else. I travelled to Bratislava, Slovakia, for the Kickboxing World Championships where I met my husband Pete. After two years of long-distance relationship I moved to Invercargill.

What do you like most about living in Invercargill, New Zealand?

I really like living in Invercargill, it offers a lifestyle I couldn't dream about! I can live in a house with my own vegetable garden and fruit trees, within 5 minutes of walk to the CBD, do sports in the evenings and still have time for myself – it is incredible!

What's been the biggest change for you?

Driving on the other side of the road. It was really scary at first but I am so used to it now, in fact I now find driving in Moscow scary. The drivers are so much worse over there, a lot more traffic and the road system is ridiculous!

What do you think is misunderstood about your culture?

When people hear me speak Russian I am often told that it sounds like I am

angry and want to fight with someone. Russian speech may sound quite harsh, we have a lot of strong consonants in our language and nobody really smiles when they speak. I also often hear comments like: "You are from Russia? Our winters must be nothing for you!" In Russia we have central heating and indoor temperature is a toasty 25°C all year round. Yet I love snow and enjoy spending time outdoors in winter.

What do you miss most while living in New Zealand?

Speaking a foreign language all the time is exhausting! I also find it quite hard being so far

away from my family, but thanks to Skype and Whats App we are able to communicate. Sometimes I crave traditional Russian foods like black bread, salted herring and fish eggs, fermented cabbage and other things. However I can order most of the stuff online or cook it from scratch.

What advice would you give to Kiwis about welcoming newcomers?

I think Kiwis are doing a pretty good job at welcoming newcomers. I am personally really lucky to be surrounded by wonderful people who have been nothing but friendly and kind to me. I really appreciate that support.





Have you checked out Word on the Street yet?



It's Council's newest way of keeping the community up-to-date on what's happening with road works and other infrastructure throughout the city via social media platform Facebook.

THE idea to set up the page was inspired by the Tay Street Foul Sewer and Storm Water Pipe Renewal project – a big project which is highly visible in our community, can change quickly, and can have an impact on the way people travel.

Social media allows Council to communicate with the wider community on urgent matters quickly, which more and more people are coming to expect. It's a useful tool to keep people informed on Council activities which might not be published in traditional media, but still have some impact on their daily lives.

Word on the Street also allows Council to keep people up-to-date on potential disruptions to their travel routes, or other small projects which might be an inconvenience to some, but not many.

So far, Word on the Street has shared information about the Tay Street project, upgrades at the Clifton Waste Water Treatment plant, various road closures and detours for road works and water projects, as well as general road safety messages.

The page has almost 1000 'likes', and last week's posts about road closures in Clifton while work was carried out reached more than 2000 people!

The page is administered by Secretarial Services staff member Petra Molloy, with support from the Communications Team.

Visit Word on the Street here: www.facebook.com/Invercargill-WordontheStreet/

Water Main Renewal on Humber/Wicklows/Elles Road.

WORKS associated with the renewal of the 300mm diameter asbestos cement water main in the above streets will likely require the closure of Frome Street between Shannon and Wicklow Streets to through traffic sometime over the week commencing 2 July. Access will be provided for residents only. Updates will be available via Council's Word on the Street Facebook page.



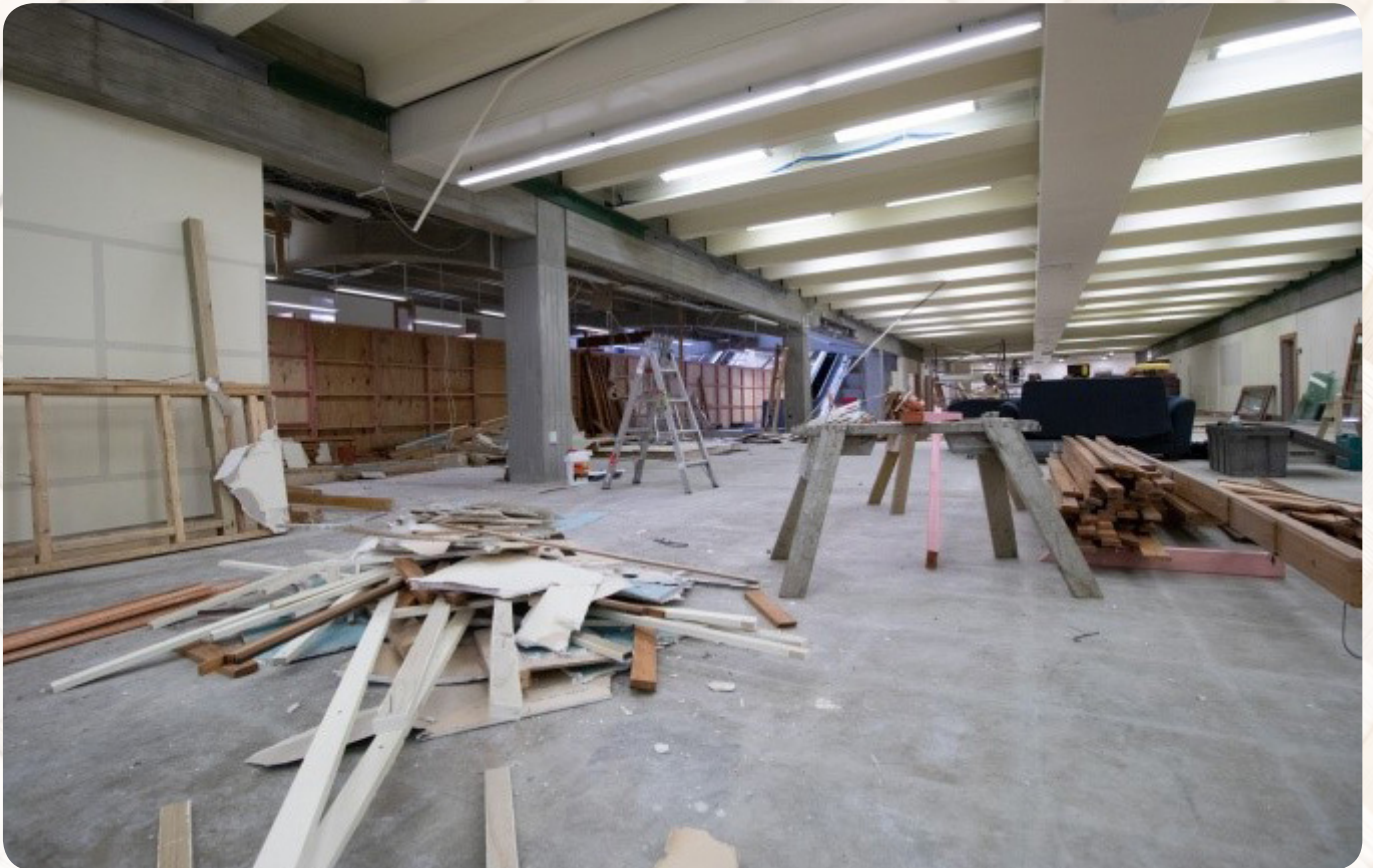
Getting to know you:

SUQIAN staff exchangee Ms Yinzi Tong (Sheila) with home host Michelle Sievwright at New World Supermarket in Windsor on Saturday.

Ms Tong arrived in Invercargill on Friday afternoon and had her first experience of a live rugby game, at the Highlanders vs the French Barbarians on Friday night.

She began work at ILT Enrich on Monday, where she will be teaching the students Mandarin, plus showing them Chinese art and cuisine. On Monday night she enjoyed her first Kiwi lamb roast dinner at a friend's house.





Library refurbishment

Stage 2 – Adults’ Services

- Hoarding in place on ground floor restricting access
- Down escalator is not accessible – use stairs or lift by car park building
- Up escalator is accessible
- Seating removed from ground floor foyer – please use seating in Children’s Services and Information Services
- Pamphlets and community newspapers have been removed from ground floor foyer – community newspapers are upstairs at entrance to Information Services and pamphlets will be relocated
- Two self-issue kiosks available in both Children’s Services and Information Services

Thanks for your understanding while the Library was closed and also while the refurbishment is ongoing.

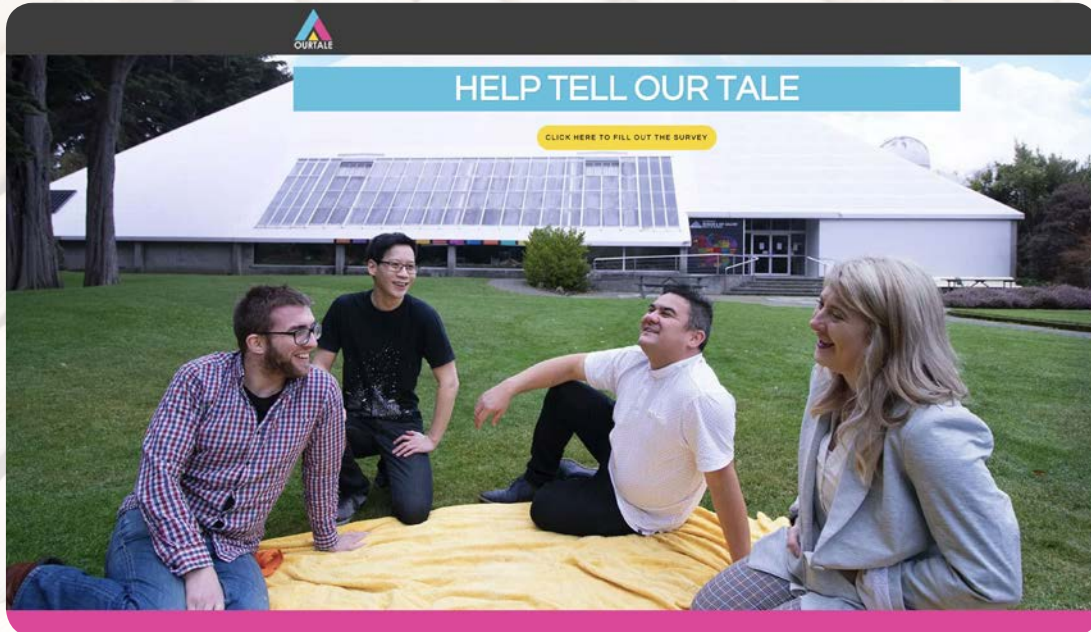
All updates about changes will be available on our website www.ilibrary.co.nz/library-refurbishment/ and on your Facebook page www.facebook.com/invlibrary/



Crafternoon Tea and Chatter Nights

This week we had Sheila Tong from our sister city, Suqian, participating in our Crafternoon Tea session held at 1pm on Thursday. She will be showing people how to do some Chinese paper craft. She will also be attending our Chatter Nights session held every Wednesday from 5pm to 6.30pm where people with English as a second language meet to improve their English language skills.

Museum consultation underway



SOUTHLANDERS are being asked to share their thoughts, hopes and dreams as part of the project to redevelop the Southland Museum and Art Gallery.

A working group will be talking with communities throughout the region to gather information in a series of workshops and public conversations during the next six weeks.

Community consultation project manager Janette Malcolm said the working group aimed to get into every corner of the region in some way.

“People will work in small groups to share their thoughts, opinions and ideas about what was great about the museum in the past as well as about the things they would like to see in a museum in the future.”

The working group would also be outside public spaces such as supermarkets and libraries all over Southland, making sure as many people as possible were aware of the consultation and how they can take part, she said.

“We’re consulting right through the generations,” Janette Malcolm said.

“Every school in Southland is getting the opportunity to be involved, we’ll be at Kidzone, we’ll have a strong social media presence and we’ll be visiting 15 towns to consult with the public.”

The information gathered is a crucial part of the review process, and working with Southlanders was particularly exciting, she said.

“Past consultations have shown us that the Southland public are right at the forefront of modern thinking, and they have fantastic ideas,” she said.

Specialist strategic planner Tim Walker, who is undertaking the redevelopment review, said community consultation is a key part of the process.

“Having a good sense of what local people care about and what they hope for in the future is a critical part of thinking about the Museum.

“I really admire Southland’s approach to making community consultation a part of projects like this – it’s so important,” he said.

Southland Museum and Art Gallery Board chair Toni Biddle is thrilled the consultation process is under way.

“It is a time of relief and excitement for the board, especially to see the review well into its process and the public consultation taking shape,” Ms Biddle said.

