



Invercargill Neighbourhood Support NEWSLETTER

Welcome...

to the February
Neighbourhood Support
Newsletter.

What a start to the year! I hope you got a chance to enjoy the record-breaking Southland heat last January and stayed safe during the holiday season. At the end of last year, one Neighbourhood Support group raised a question about the use of drones which turned out to be quite a hot topic in Invercargill. We thought that this newsletter would be a great opportunity to bring up this question. We want to hear from you! What else would you like to learn about?

*Saniya
Thompson*



Drones

Remotely Piloted Aircraft Systems (RPAS) or better known as drones are becoming more and more popular nowadays which results in an increase in complaints involving drones flying over people or private property.

Police and the Civil Aviation Authority (CAA) are working together to ensure a consistent response to problems involving drones.

If the drone operation causes a safety risk to persons, property or other aircraft – potentially breaching the rules - police can respond and take all the details for forwarding to the CAA.

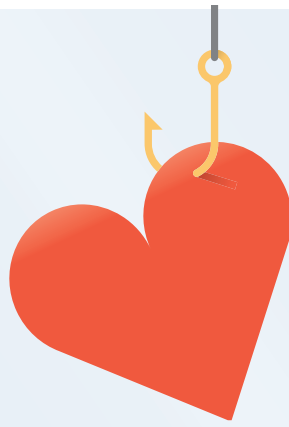
Police deals with complaints involving noise, nuisance or privacy issues.

If you operate a drone or want to know more about operating one visit <https://www.airshare.co.nz/> to learn more.

In Invercargill flying drones is allowed in designated areas listed below. Please see the map <https://icc.govt.nz/wp-content/uploads/2016/06/Unmanned-Aerial-Vehicles-Policy.pdf> for the boundaries of the designated spaces:

Argyle Park, Bluff • Donovan Park • Elizabeth Park
Makarewa Domain • McQuarrie Park
Myross Bush Domain • Waikiwi Domain

Romance Scams



“Romance fraud” is a modern menace for those looking for love.

Millions of dollars in losses are reported yearly to Police and to Netsafe. There was \$1.3 million lost to romance scams in 2015. However, the actual number is thought to be considerably higher, with victims not reporting many cases owing to embarrassment.

A scammer pretends to be in a relationship with someone online in order to get money out of them. They do this through email, social media, dating websites and other website and apps. Usually these scammers are pretending to be someone they’re not, using photos and identities of people they’ve found online. Scammers spend a lot of time and effort to build a relationship online, and can make the relationship seem very real.

Once they’ve worked to gain the trust of the person they’ve targeted, they will use various stories to get money or details from that person. They may start by requesting small sums of money to test their target, and then start requesting larger amounts.

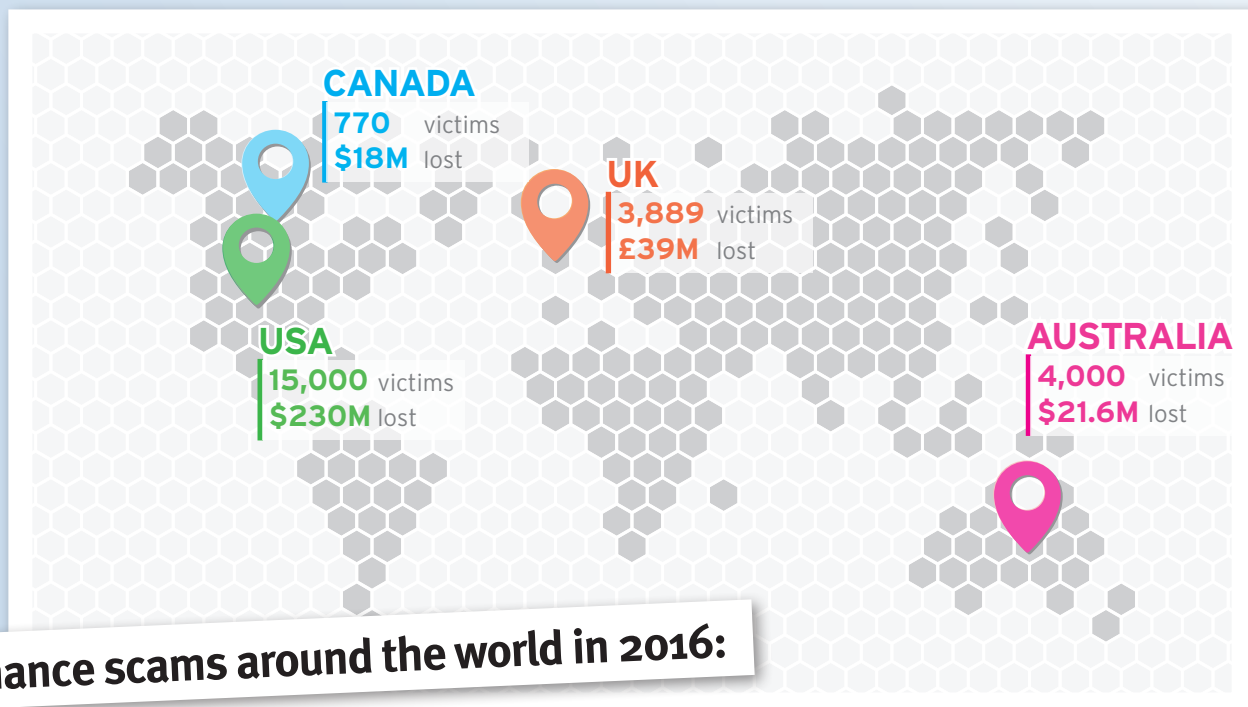
There is no fail proof way to identify a romance scam,

but there are signs you can look out for:

- ♥ Moving too fast: declaring strong feelings within a short time of meeting the person online.
- ♥ Asking for money: Any request for payment via money transfer should set off alarm bells.
- ♥ Personal troubles, that can be solved with money: critical medical conditions, family issues, business troubles or other issues
- ♥ A new romantic contact is not willing to meet up, or comes up with a series of excuses to avoid meeting, you should be cautious.

What if a friend or family member is being scammed?

If you suspect a friend or family member is being scammed, you may need to intervene. You should think carefully about who the best person is to have the conversation – this should be someone who they trust. The scammers have spent time and effort building trust, so convincing the person targeted that they are being scammed may not be an easy conversation.



Romance scams around the world in 2016:



Home Fire Safety

Over the last three years 25% of structure fires were the result of an electrical ignition source. Electricity is energy and due to equipment failure, maintenance issues or incorrect use of equipment that energy becomes the source of heat which in turn ignites nearby combustible materials. This can lead to substantial structure damage.

Common causes include multi boxes. Multi-boxes are multiple electrical sockets mounted into a portable case. They can be cheap to purchase and are a ready fix for powering multiple appliance at the same time. It is important to read the instructions when purchasing such equipment. We find that fires have resulted from overloaded multi-boxes. The instructions will provide a guide as to the safe maximum electrical load that can be placed on the multi-box. These units are ideal for powering TV's, stereos computers and other appliances that consume minimal power. They should not be used for supplying electricity to heavy load appliances such as heaters, dryers, washing machines or stoves. Problems can also be found where plugs have been incorrectly inserted into the socket. This often occurs when different appliances are plugged in and removed on a regular basis. The contacts can become damaged. The result is localised heating around the contacts. Leading to melting and ignition of the plastic cover on the multi box.

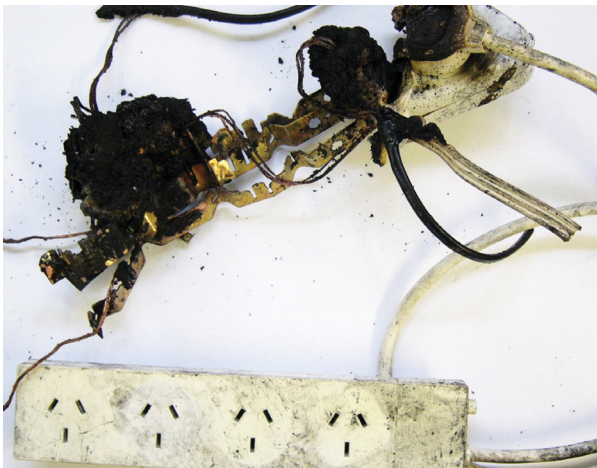
Overloaded power points can result in the same problems. Four way switched socket outlets can be fitted permanently providing four power outlets eliminating the need for multi-boxes. Be sure to consult a qualified electrician and have them install the units correctly.

Extensions cords are a temporary solution and should never be used as a permanent fix.

Make sure cords are in good condition. Check for damaged or exposed wiring.

Ensure your three pin plugs are inserted correctly and pushed home completely.

Winter also brings about greater use of electricity in people's homes. If you're using electric heaters remember to plug them directly into a wall socket.



Some tips to prevent the common misuse of electrical equipment that we often see causing a fire:

- Limit the number of appliances plugged into an outlet or an extension cord. Rule of thumb - One heater per power socket outlet.
- Replace any outlets where the plug does not fit firmly into the outlet – a loose contact is unsafe and may provide sufficient resistance heating to cause a fire.
- When changing fuses use the correct fuse wire for the circuit in use.
- If an appliance does not work correctly, either have this repaired or dispose of it correctly.

Only working smoke alarms save lives

In **80%** of the fires the Fire Service attend, smoke alarms are either not installed or not working. Breathing smoke from a house fire can be fatal in seconds. That is why you need **working smoke alarms** as an early warning system.

- Incorrectly located smoke alarms can cause nuisance alarms.
- The Fire Service recommends the installation of long life photo electric smoke alarms in all living areas, hallways and bedrooms and on every level of a home.
- Test the battery regularly.
- If you need advice with your smoke alarms please phone the Southland Area Fire Service 03 214 3760.

Also note, the new residential tenancy act requires the landlord to provide and install smoke alarms and the tenants are required to maintain them.

Please visit <https://www.tenancy.govt.nz/maintenance-and-inspections/smoke-alarms/> for any more information.

Always have an escape plan

Remember you need to :

- Make sure that doors and windows needed for escape are clear and easy to open and that there is a safe way to reach the ground from upper floors
- Keep keys in deadlocks at all times when home
- Make special plans for children and older people
- All your family needs to do is understand the escape plan, and practice escaping from each room of the house by the two exits.
- Make sure everybody in your household knows where the safe meeting place is.

In the event of fire dial 111 for the Fire Service.

For any more information, check out our website: www.fire.org.nz.

Michael Cahill

Fire Risk Management Officer/Specialist Fire Investigator



*Welcome to: Paisley Place, Bainfield Road.
Welcome to re-established groups: Charlotte and
Margaret Streets, Compton Street.*

Ideas for a

neighbourhood gathering

- Morning/afternoon tea
- Progressive lunch or dinner
- Kids' treasure hunt at your local park
- Joint garage sale
- Street BBQ

Decide what sort of gathering you will hold and a date and time that will suit your neighbours. Choose a venue - it may be a back garden, local reserve or you may decide to hire a venue.

Deliver invitations and ask people to bring a plate of food to share or contribute in some way. Invitations let your neighbours know of your gathering and who to contact for more information and to RSVP.

We can support your group gathering by providing a \$20 supermarket voucher, printing out invitations, organizing a venue or inviting a guest speaker for your gathering.

If you are not sure where to start, give me a call!



Neighbourhood Support in Invercargill Today



135 | Groups



1,587

Households



Invercargill
Neighbourhood Support

Invercargill City Council, 101 Esk Street, Invercargill 9810
neighbourhood.inv@icc.govt.nz · Direct Dial 211 1697

