

Photo facing west.



Photo facing north.



Photo facing south.



Photo facing east. Door to basement.



Photo facing south. Staircase down to basement.



Photo facing north. K + K Store.





Photo facing north. Pinch of Spice store.

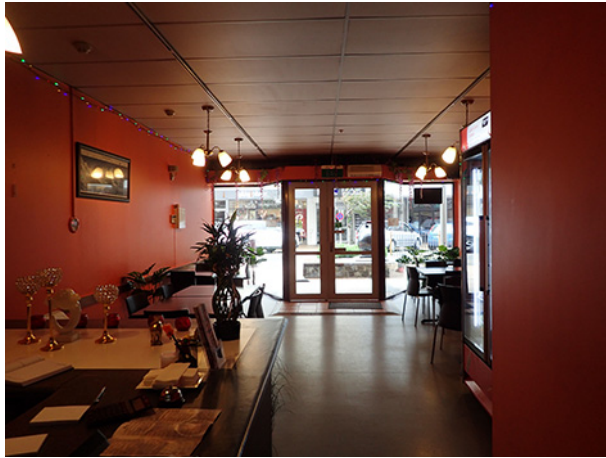


Photo facing south. Pinch of Spice store.



Photo facing east.



Photo facing north.

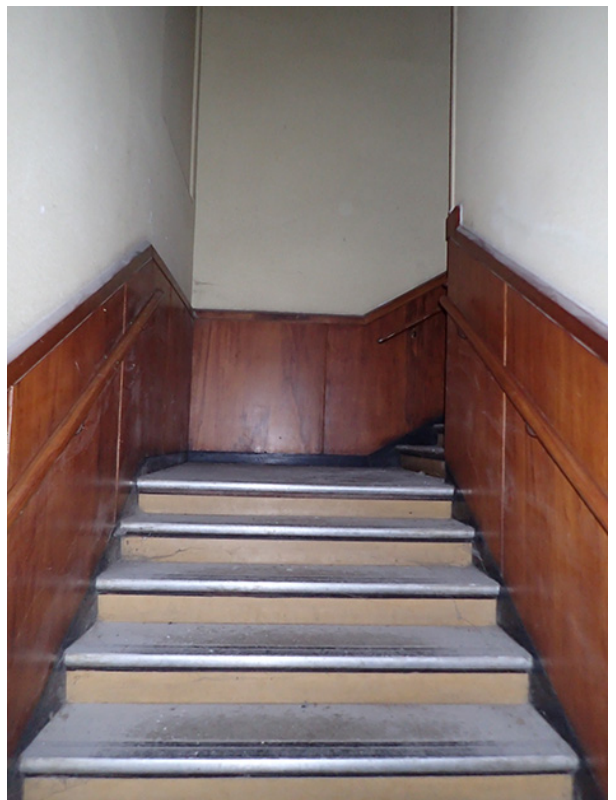


Photo facing north.



Photo facing south.



Photo facing west.



Photo facing east.





Photo facing north.



Photo facing east.



Photo facing south.



Photo facing north.





Photo facing southeast.



Photo facing south.



Photo facing north.



Photo facing south.





Photo facing north.



Photo facing west.



Photo facing east.



Photo facing southeast.



Photo facing east.



Photo facing southwest.



Photo facing south.



Photo facing west.





Photo facing north.



Photo facing west.



Photo facing northwest.



Photo facing west.



Photo facing west.





Photo facing northwest.



Photo facing west.



Photo facing east.



Photo facing southeast.





Photo facing southeast.



Photo facing east.



Photo facing east.



Photo facing west.





Photo facing west.



Photo facing east.



Photo facing south.



Photo facing north.



Photo facing southeast.



Photo facing south.



Photo facing east.





Photo facing west.



Photo facing east.



Photo facing north.



Photo facing south.



Photo facing west.



Photo facing northeast.



Photo facing north.



Photo facing west.





Photo facing south.



Photo facing southeast.



Photo facing west.



Photo facing east.



Photo facing south.



Photo facing south.



Photo facing north.



Photo facing south.





Photo facing east.



Photo facing east. Detail of the flooring.



Photo facing west.



Photo facing east.



Room 43 - storage

second floor

Photo facing south.



Photo facing north. Note the yellow and grey striped linoleum.



Room 44 - office

second floor

Photo facing north.



Photo facing south.





Photo facing north.



Photo facing south.



Photo facing north.



Photo facing south.



Photo facing east.



Photo facing north.



Photo facing west.



Photo facing east.





Photo facing west.



Photo facing south.



Photo facing north.



Photo facing south.



Photo facing east.



Photo facing west.



Photo facing north.



Photo facing south.





Photo facing east.



Photo facing west.



Photo facing west.



Photo facing southeast.



Photo facing east.



Photo facing south.



Photo facing south.



Photo facing north.





Photo facing east.



Photo facing west.



Photo facing west.



Photo facing east.



Photo facing east.



Photo facing west.



Photo facing north.



Photo facing south.





Photo facing east. Detail of brick beneath hardboard.



Photo facing south.



Photo facing east.



Photo facing west.





Photo facing south.



Photo facing north.



Photo facing north.



Photo facing south.





Photo facing south.



Photo facing west.



Photo facing east.



Photo facing west.



Photo facing south.



Photo facing north.



Photo facing south.





Photo facing north.



Photo facing south.



Photo facing south.



Photo facing north.



Photo facing north.



Photo facing south.



Photo facing north.



Photo facing south.





Photo facing north.



Photo facing south.



Photo facing east.



Photo facing west.



Photo facing south.



Photo facing south.



Photo facing south.





Photo facing west.



Photo facing east.



Photo facing north.



Photo facing south.



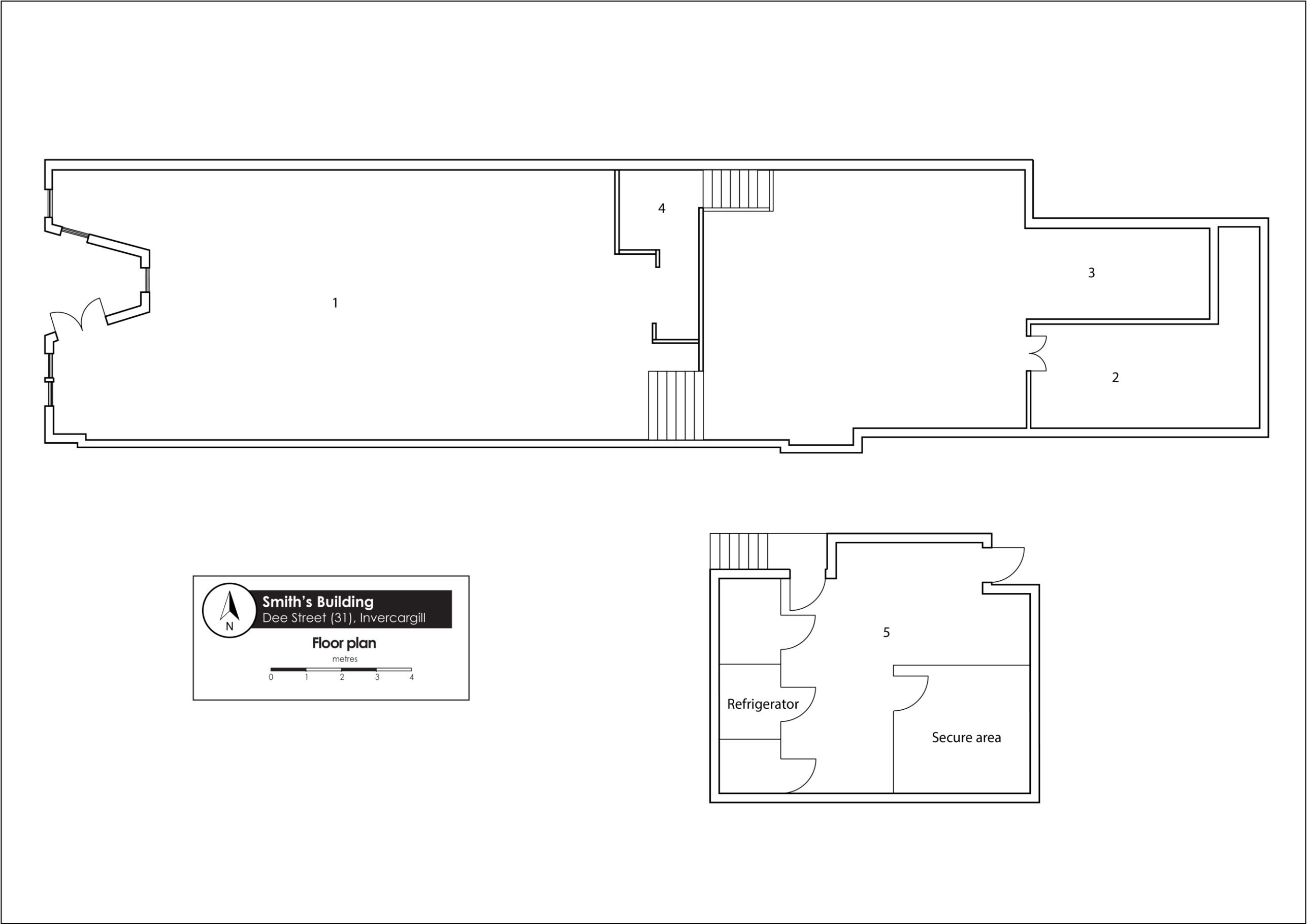


Figure D-11. Ground floor (top) and basement (bottom) floor plans of Smith's Building.



West elevation

Photo facing east.



Photo facing east. Detail of the shop front.



East elevation

Photo facing west.



Photo facing east.



Photo facing west.



Photo facing east.



Photo facing west.





Photo facing east.



Photo facing north.



Photo facing west.



Photo facing east.



Photo facing west.





D.4 MacDonald's Building (41 Esk Street)

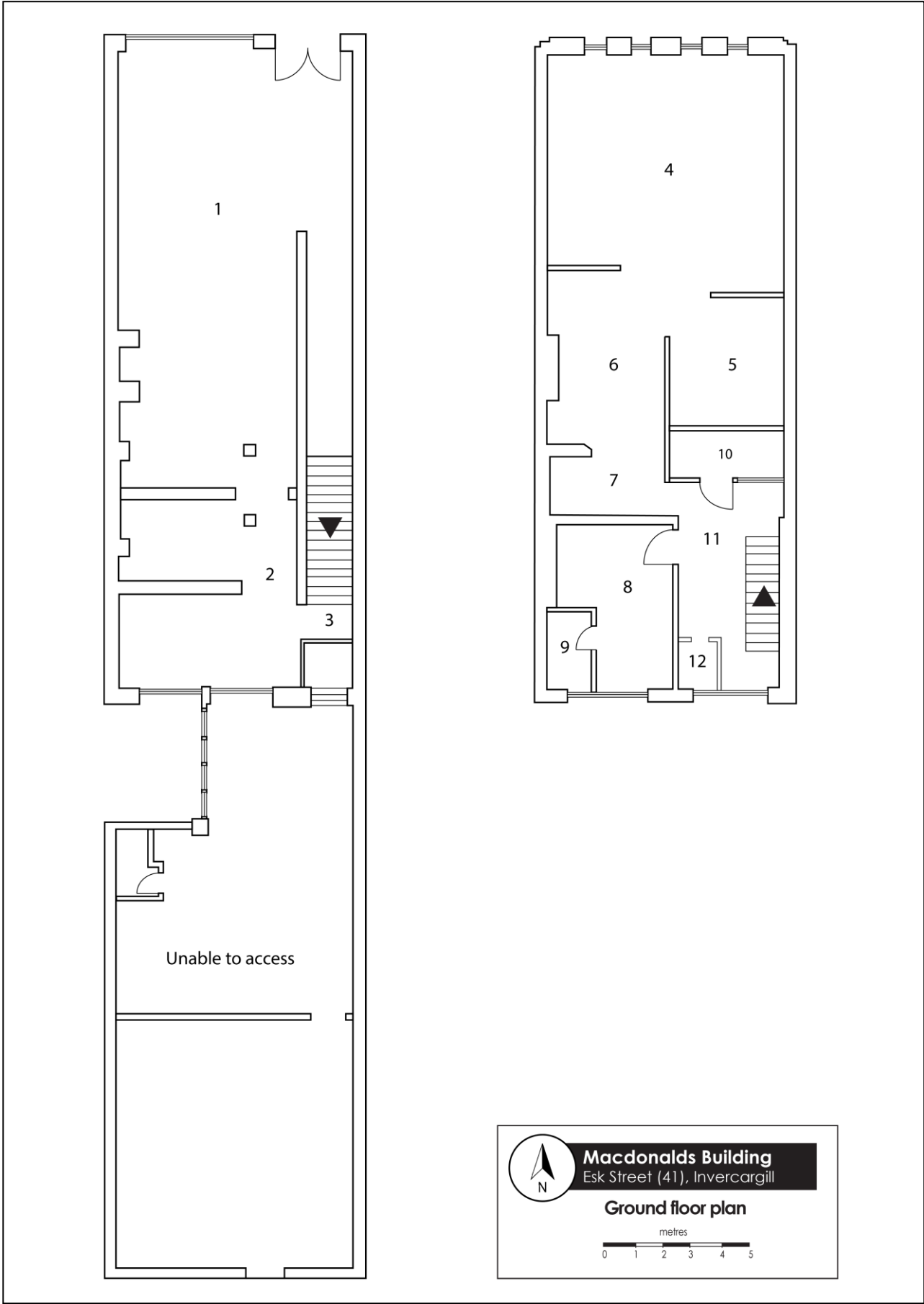


Figure D-12. Ground (left) and first (right) floor plans of MacDonald's Building.

North elevation

Photo facing south.



Room 01 - retail

ground floor

Photo facing north.



Photo facing south.





Photo facing southwest.



Photo facing northeast.



Photo facing north.



Photo facing south.



Photo facing north.



Photo facing south.



Photo facing north.



Photo facing south.





Photo facing north.



Photo facing south.



Photo facing southwest.



Photo facing south.



Photo facing southwest.





Photo facing northeast.



Photo facing east.



Photo facing south.





D.5 Coxhead's Building (31-35 Esk Street)

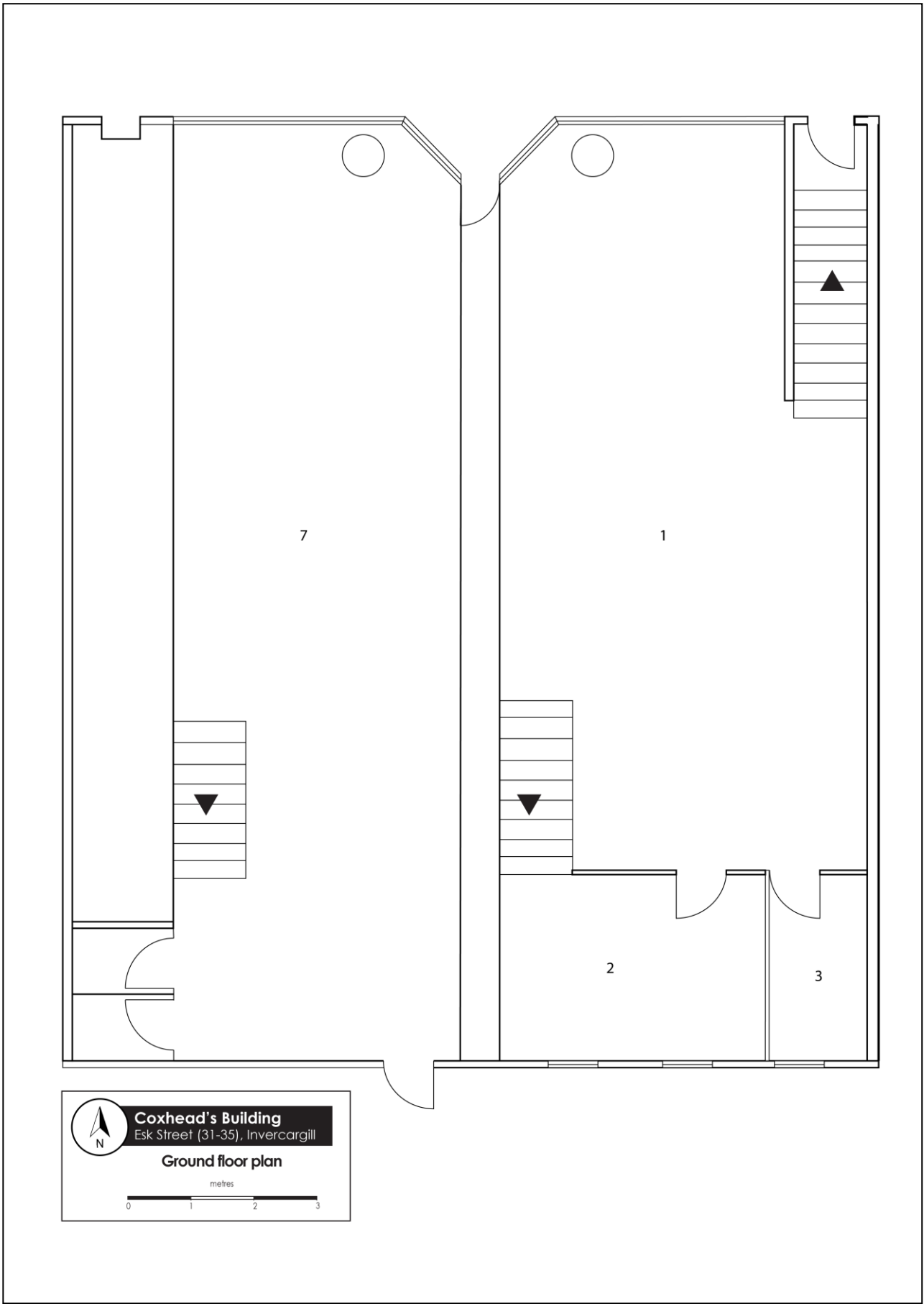


Figure D-13. Ground floor plan of Coxhead's Building.

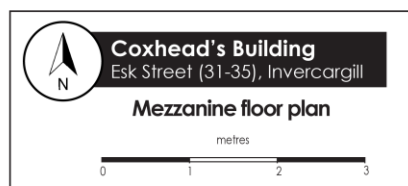
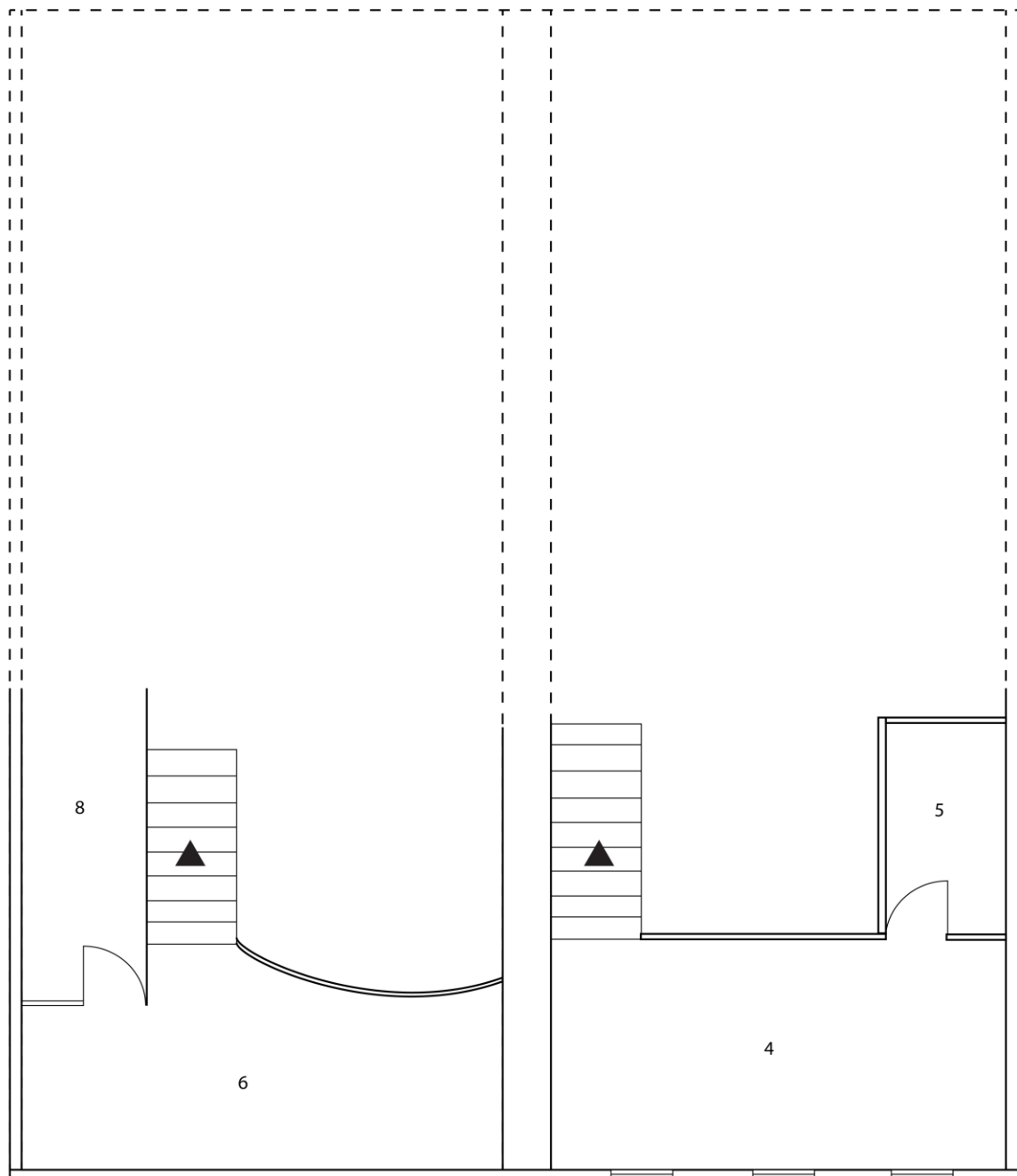


Figure D-14. Mezzanine floor plan of Coxhead's Building.



North elevation

Photo facing south.



South elevation -

Photo facing north.



Photo facing north. Detail of window



East elevation -

Photo facing west.



Room 01 - restaurant

ground floor

Photo facing north.



Photo facing south.





Photo facing east.



Photo facing south.



Photo facing east.



Photo facing west.





Photo facing south.



Photo facing north.



Photo facing south.



Photo facing north.



Photo facing south.



Photo facing west.





Photo facing east.



Photo facing west.



Photo facing north.



Photo facing south.



Photo facing west. Detail of locked door



Photo facing west.



Photo facing east.





Photo facing west.



Photo facing north.



Photo facing south.



Photo facing north.



Photo facing north.



Photo facing south.



Photo facing south.





Photo facing east.



Photo facing west.



Photo facing north.



Photo facing east.



Photo facing west. Detail of strong room door.



Photo facing west. Detail of ceiling above strong room.





D.6 Martin, Maitland & Co.'s Building (37 Esk Street)

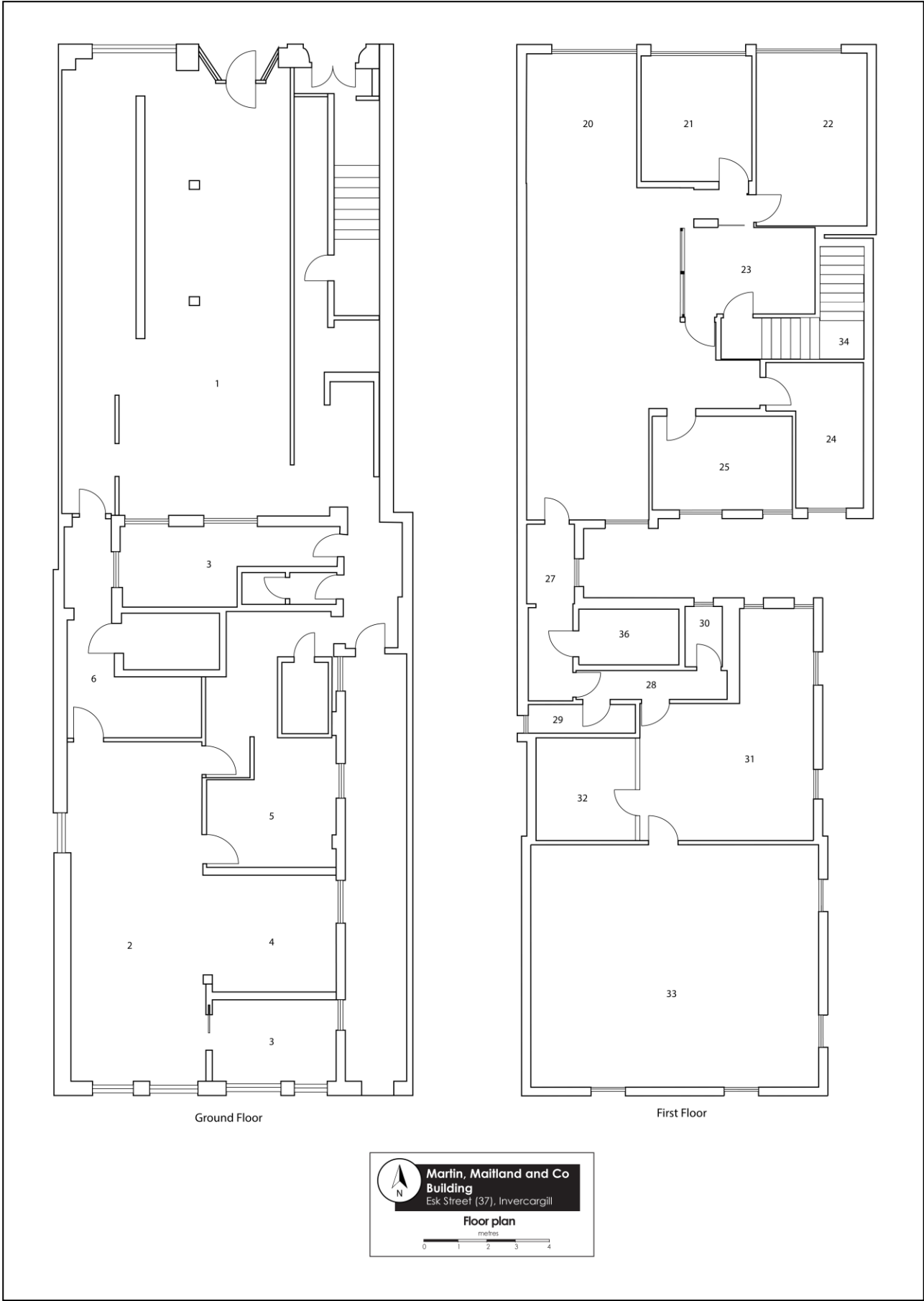


Figure D-15. Ground (left) and first (right) floor plans of Martin, Maitland and Co.'s Building.

North elevation

Photo facing south.



South elevation

Photo facing north.



Photo facing north. Detail of blocked window





**Yard**

Photo facing south.



**Room 01 - restaurant**

**ground floor**

Photo facing north.



Photo facing north.



Photo facing south.



Photo facing east.





Photo facing east.



Photo facing southwest.



Photo facing north.



Photo facing east.



Photo facing west.





Room 20 - reception

first floor

Photo facing north.



Photo facing south.



Room 21 - office

first floor

Photo facing north.



Photo facing south.



Photo facing south.



Photo facing north.



Photo facing north.



Photo facing south.





Photo facing south.



Photo facing north.



Photo facing east.



Photo facing west.



Photo facing east.



Photo facing east. Detail of door manufacturer's mark.



Photo facing north.



Photo facing south.





Photo facing east.



Photo facing west.



Photo facing north.



Photo facing west.

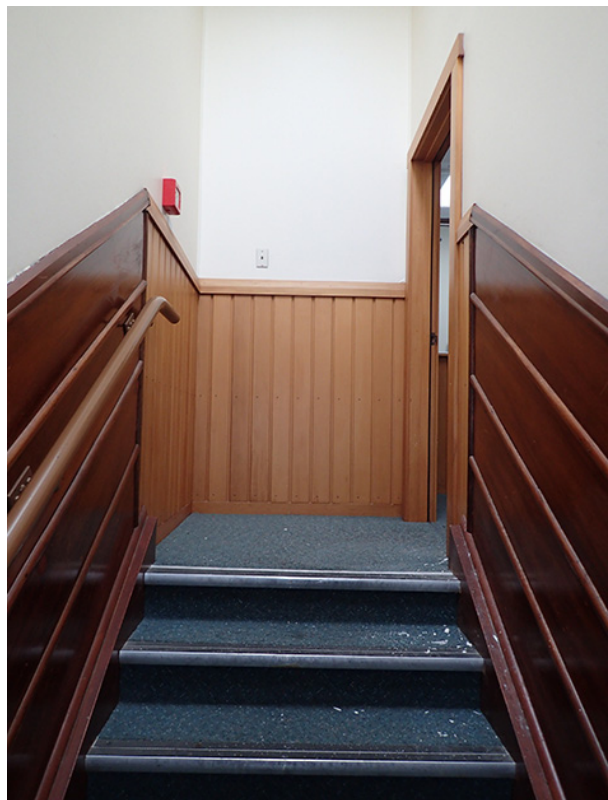


Photo facing north.



Photo facing south.



Photo facing south.



Photo facing north.

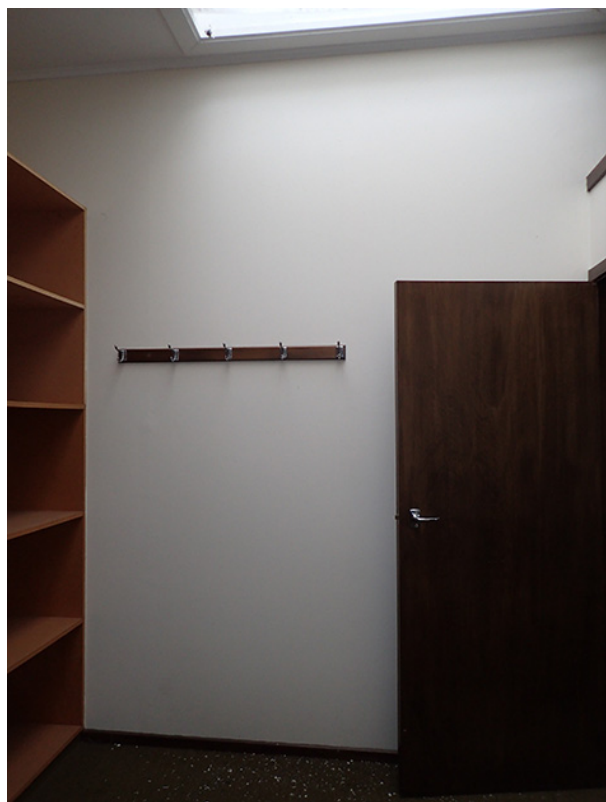




Photo facing north.



Photo facing east.



D.7 Temple Chambers (49 Esk Street)

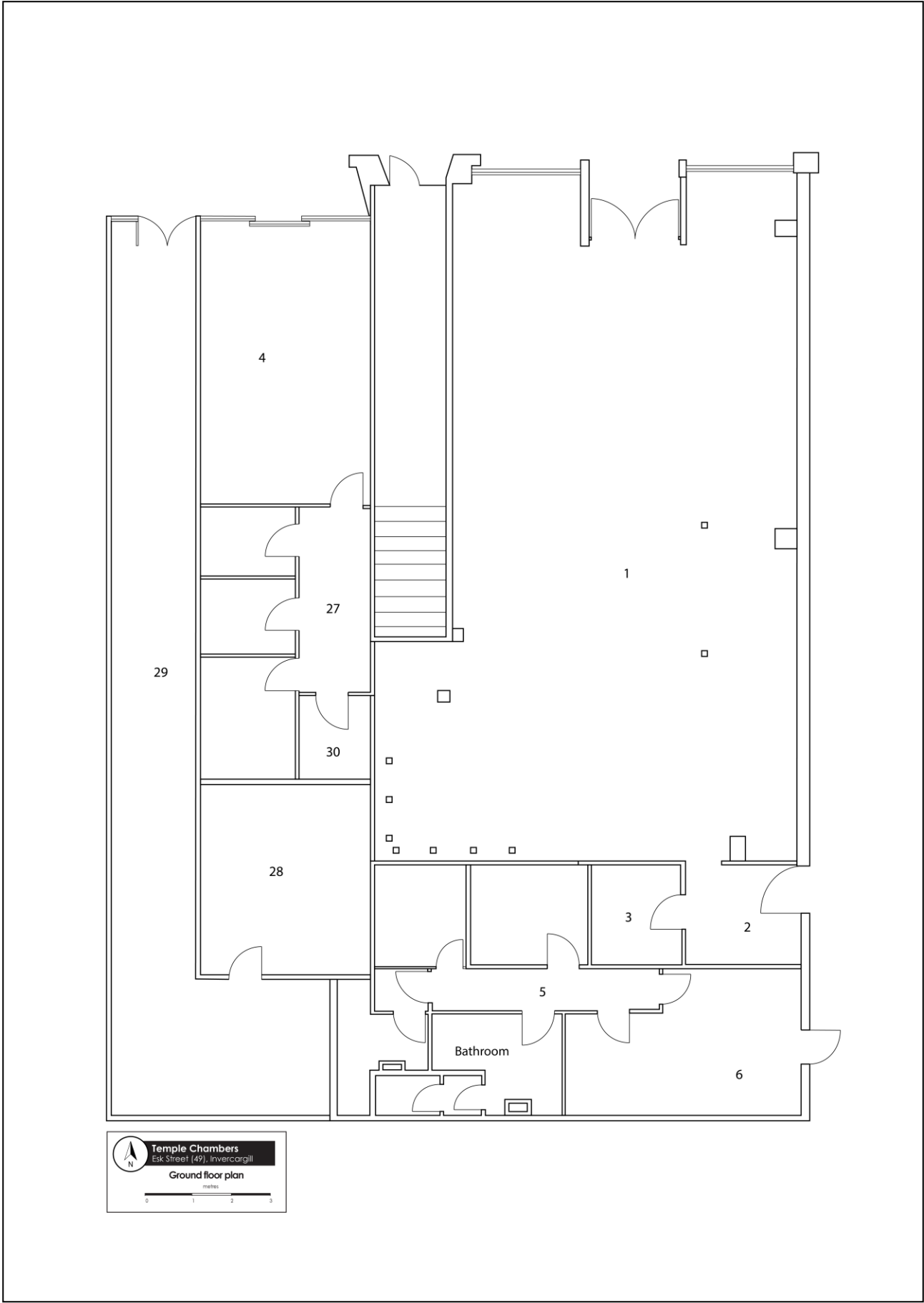


Figure D-16. Ground floor plan of the Temple Chambers.



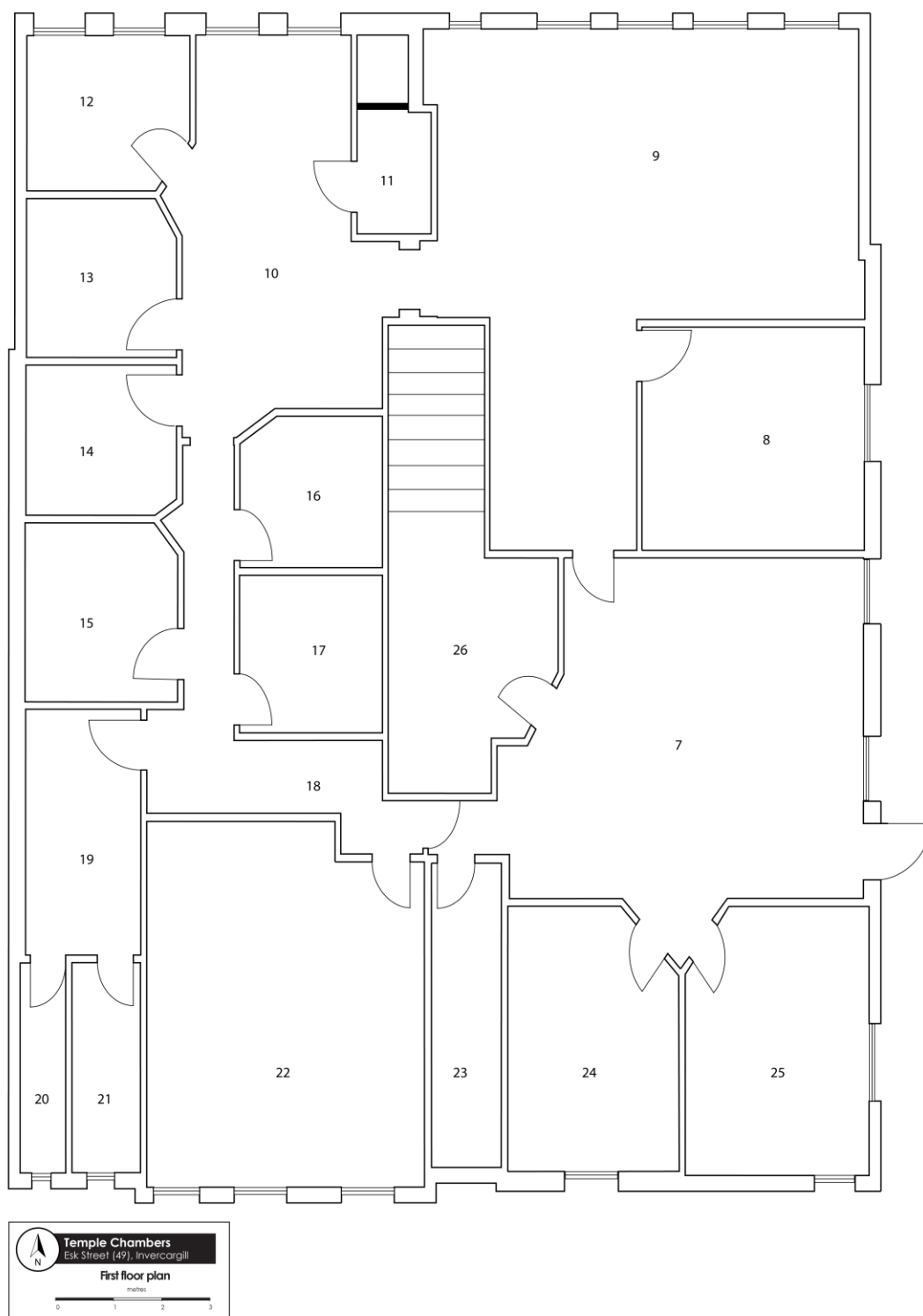


Figure D-17. First floor plan of the Temple Chambers.

North elevation

Photo facing south.



South elevation

Photo facing north. View of Barclay Lane.





East elevation -

Photo facing southwest.



Photo facing west. Detail of window



Room 01 - retail

ground floor

Photo facing north.



Photo facing south.



Photo facing east.



Photo facing west.



Photo facing east.



Photo facing west.





Photo facing north.



Photo facing south.



Photo facing south.



Photo facing south.

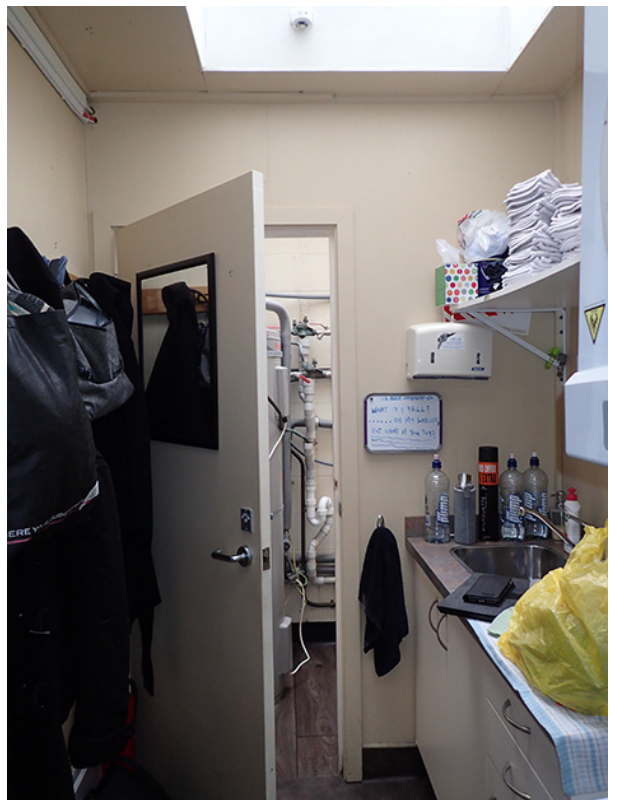


Photo facing east.



Photo facing west.



Photo facing north.





Photo facing east.



Photo facing west.



Photo facing east.



Photo facing west.



Photo facing north.



Photo facing south.



Photo facing east.





Photo facing northwest.



Photo facing west.



Photo facing west. Detail of ceiling



Photo facing west.



Photo facing west.





Photo facing northeast.



Photo facing east.



Photo facing east.



Photo facing west.



Photo facing north.



Photo facing south.





Photo facing south. Mens' toilet



Photo facing south. Womens' toilet



Photo facing north.



Photo facing south.



Photo facing north.



Photo facing south.





Photo facing north.



Photo facing south.



Photo facing north.



Photo facing south.



Photo facing north.



Photo facing south.



Photo facing east.



Photo facing west.

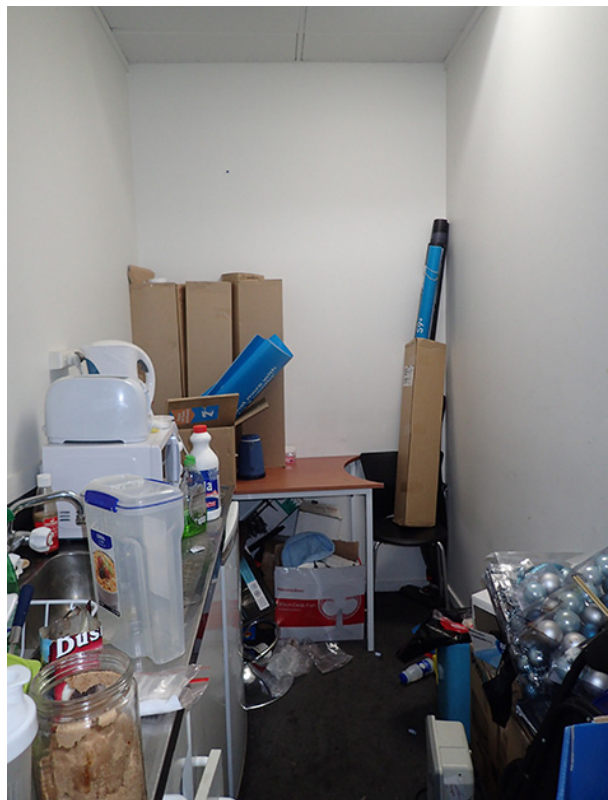




Photo facing north.



Photo facing south.



Photo facing north.

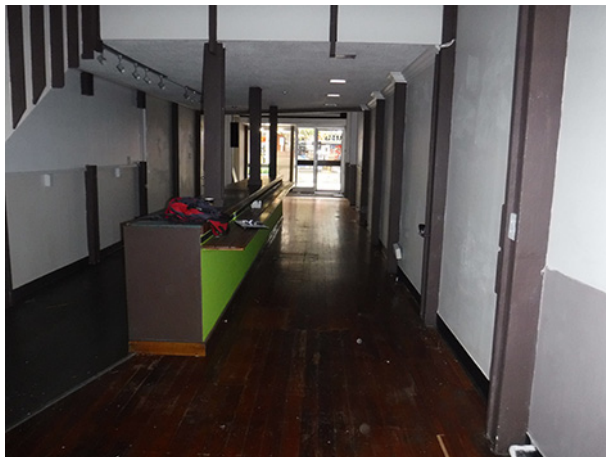


Photo facing south.



Photo facing south.





D.8 NZIC Building (51-53 Esk Street)

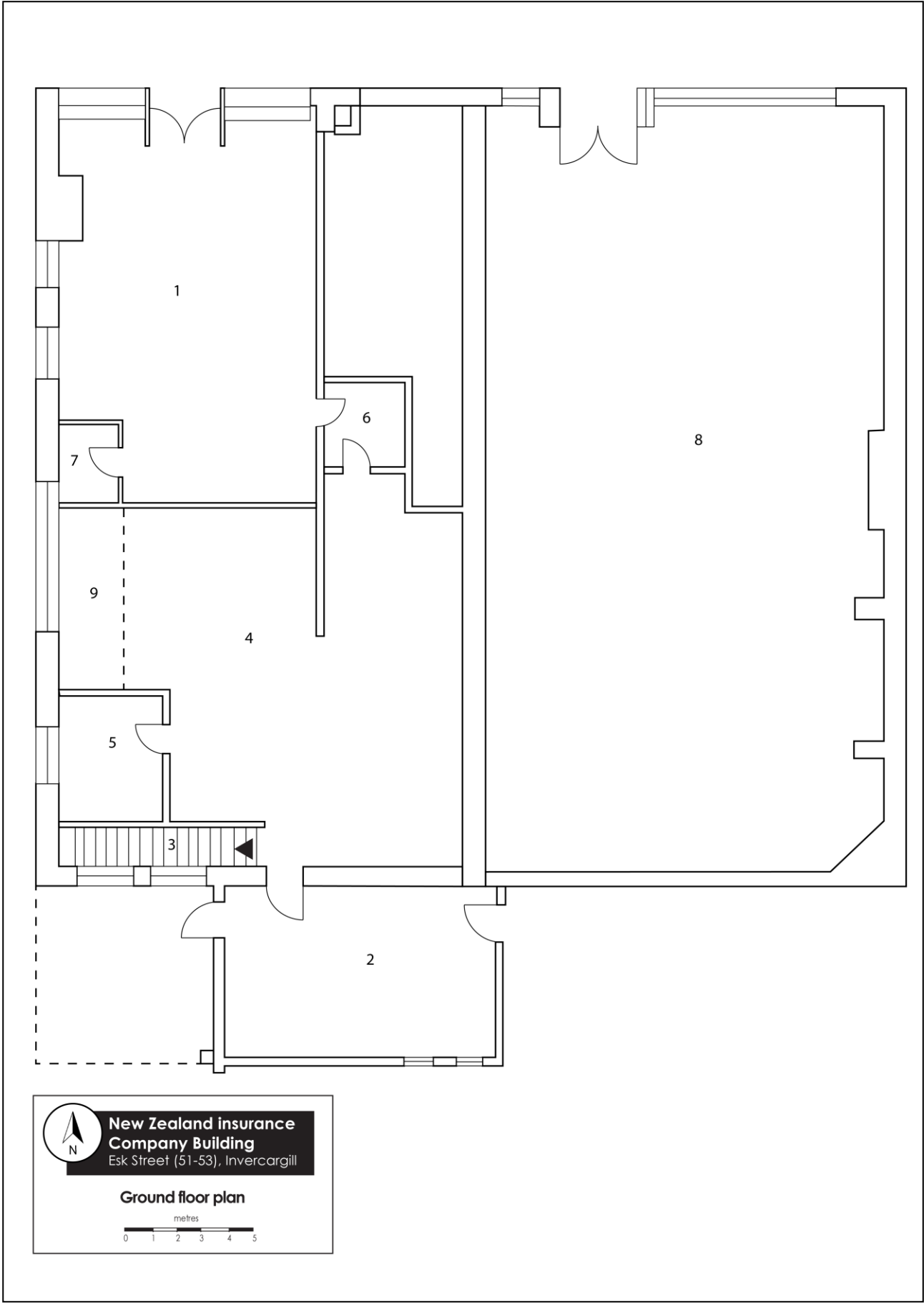


Figure D-17. Ground floor plan of the NZIC Building.

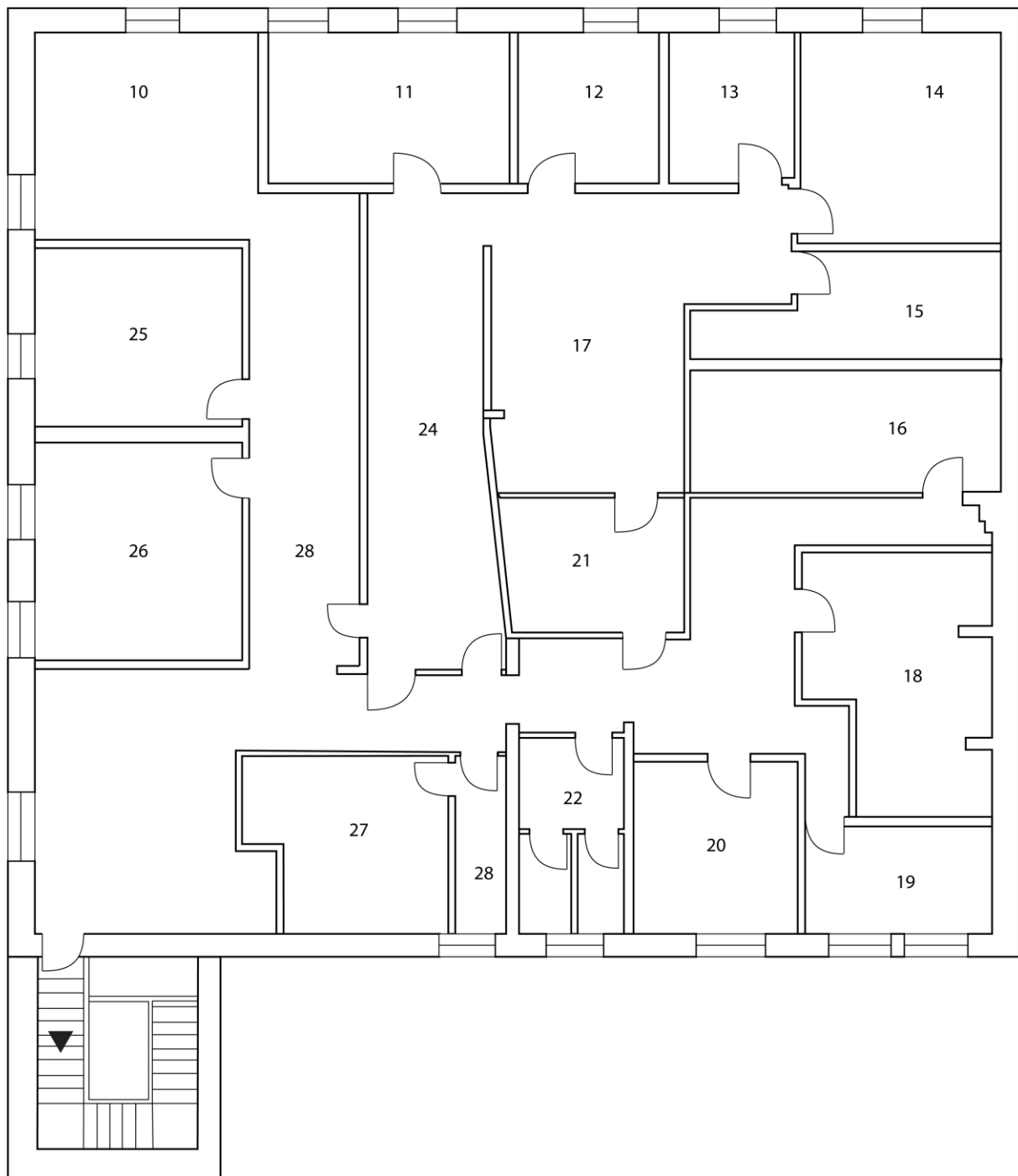


Figure 6-1. First floor plan of the NZIC Building.



North elevation

Photo facing south.



South elevation -

Photo facing north.



East elevation

Photo facing northwest.



West elevation

Photo facing southeast.



Photo facing east. Detail of blocked door

