

LEGEND

— Road

□ Study area

Increasing likelihood and severity of ground damage

LIQUEFACTION CATEGORY IS UNDETERMINED

LIQUEFACTION DAMAGE IS UNLIKELY

LIQUEFACTION DAMAGE IS POSSIBLE

Very Low Liquefaction Vulnerability

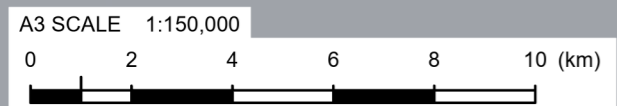
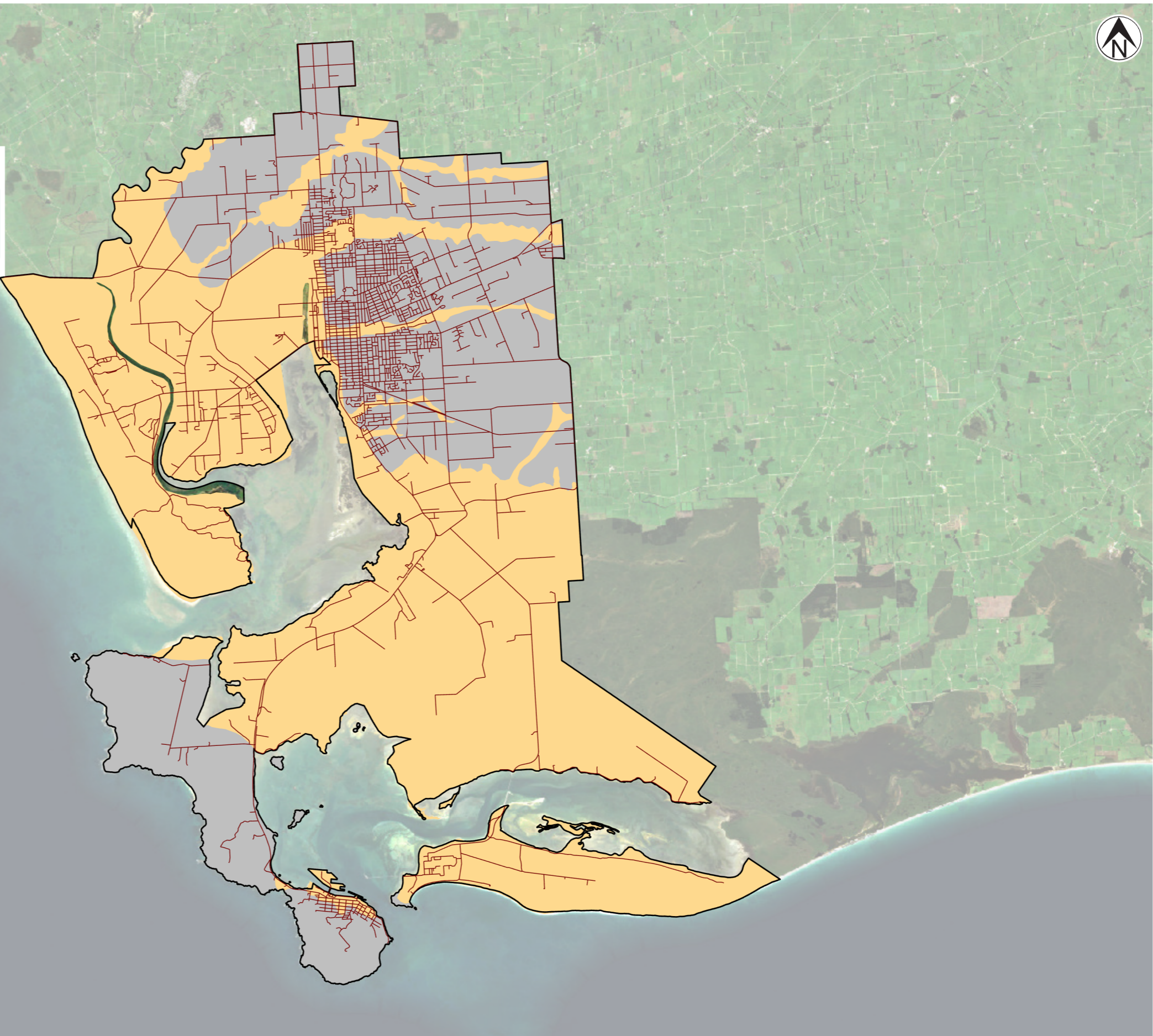
Low Liquefaction Vulnerability

Medium Liquefaction Vulnerability

High Liquefaction Vulnerability

Increasing precision in the categorisation

Decreasing uncertainty in the assessment



Exceptional thinking together www.tonkintaylor.co.nz

NOTES:
 1. Basemap sourced from the LINZ Data Service and licensed for re-use under the Creative Commons Attribution 4.0 New Zealand license.
 2. This map is sourced from the Tonkin + Taylor report dated 26/11/2021. Reference number: 1018612. See report for further details.

0	First version	MOLI	DXLR	22/11/21
REV	DESCRIPTION	GIS	CHK	DATE



PROJECT No.	1018612.000		
DESIGNED	HU	NOV.21	
DRAWN	MOLI	NOV.21	
CHECKED	ERBI	NOV.21	
APPROVED		DATE	

CLIENT	INVERCARGILL CITY COUNCIL		
PROJECT	LIQUEFACTION VULNERABILITY ASSESSMENT		
TITLE	LIQUEFACTION VULNERABILITY CATEGORIES		
SCALE (A3)	1:150,000	FIG No.	FIGURE B1
REV			0