

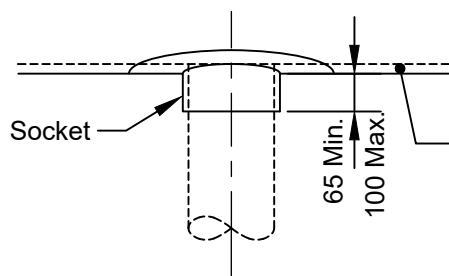
Branch pipework. Must not be connected to square saddle or 45° saddle until after epoxy mortar / glue joint has set or unless bands have been fitted round main

Socket for solvent cement joint

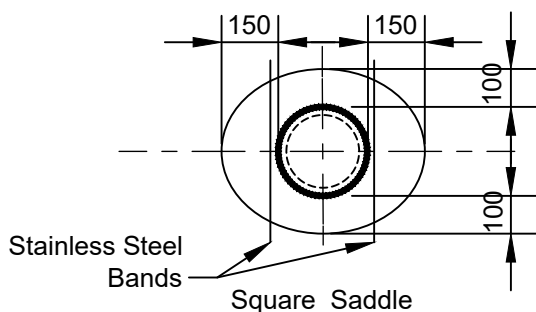
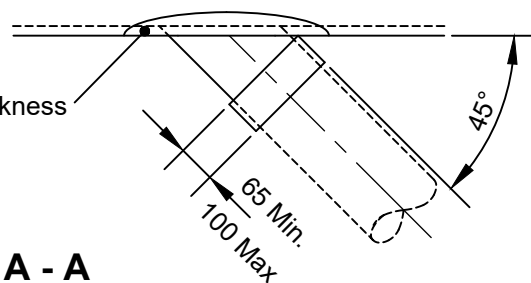
Notes

1. For 225mm Ø pipe and above
2. Pipe shall be cut with jigsaw or cone drilling equipment or similar method approved by the Drainage Manager
3. Saddle shall conform to AS / NZS 1260. P.V.C. pipes and fittings for drain waste and vent application or similar approved by the Drainage Manager
4. PVC to PVC shall be primed and glued

Concrete encased up to 300mm Ø

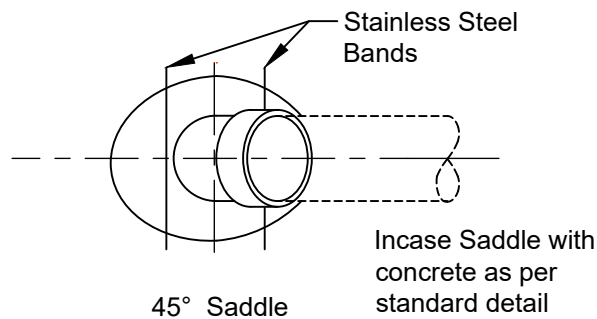


Section A - A



Approved for Construction

Section B - B



Not to scale