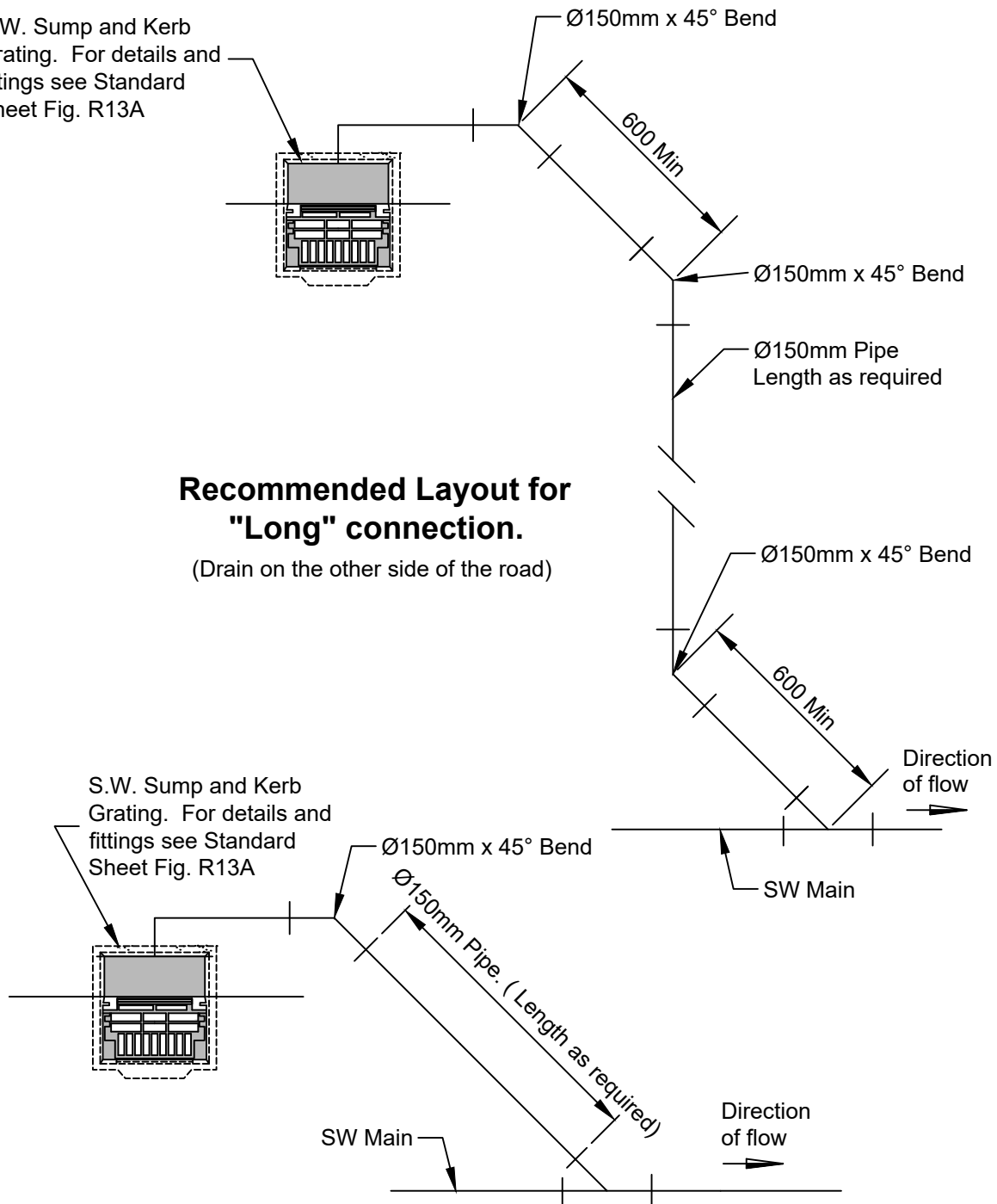


S.W. Sump and Kerb  
Grating. For details and  
fittings see Standard  
Sheet Fig. R13A

### Recommended Layout for "Long" connection.

(Drain on the other side of the road)



#### Notes.

1. "Back Entry" type sump connection shown. Position may vary as required by the Engineer.
2. Compacted granular bedding and surround to AS/NZS 2566.2

### Recommended Layout for "Short" Connection

(Drain on the other side of the road)

Not to scale