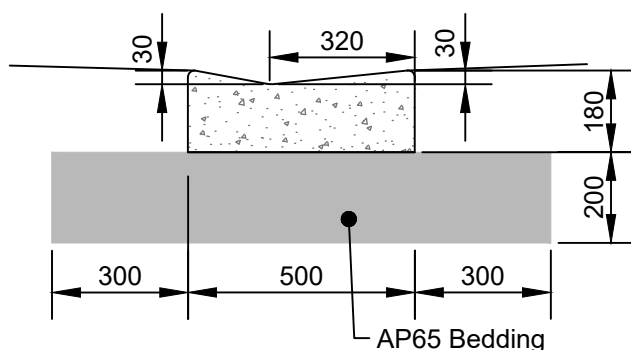
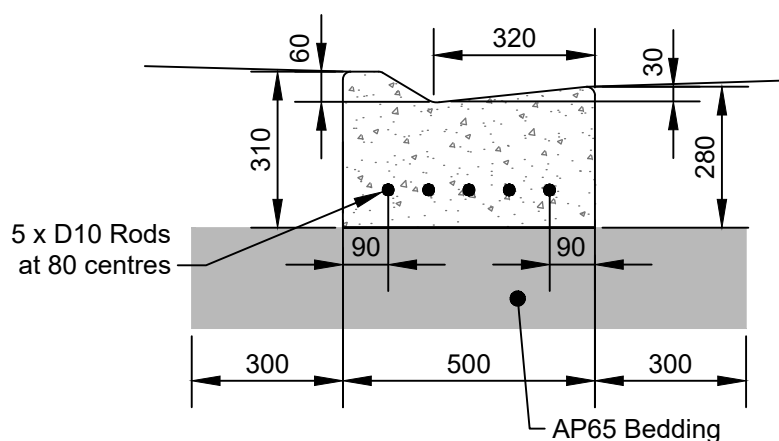


**MOUNTABLE KERB
AND CHANNEL**



**MOUNTABLE KERB AND CHANNEL
PRAM CROSSING**



**HEAVY DUTY MOUNTABLE
KERB AND CHANNEL**

Notes

1. All radii to be 20mm min.
2. All concrete to be 20MPa (min) certified concrete to NZS 3104
3. Clegg Impact Value of bedding to be 35 (min.)
4. All Kerb and Channel to be constructed with one pour.

Not to scale