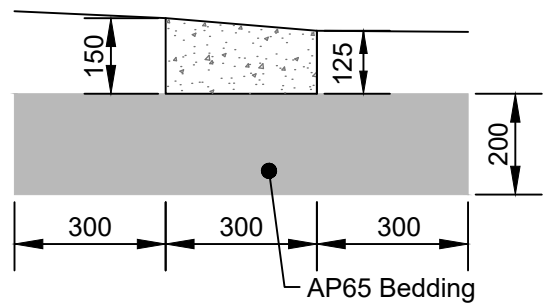
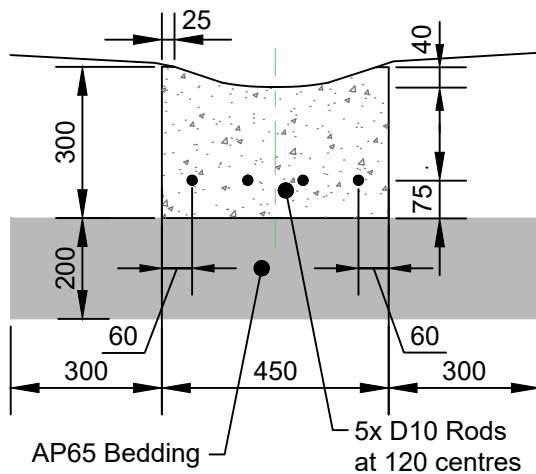


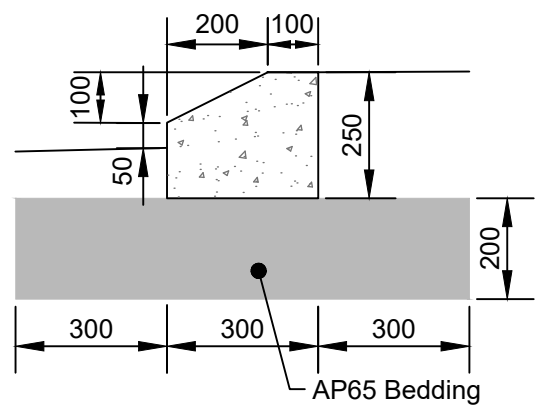
**DISH CHANNEL**



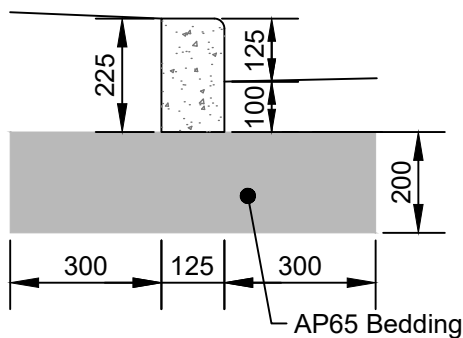
**ROAD EDGE**



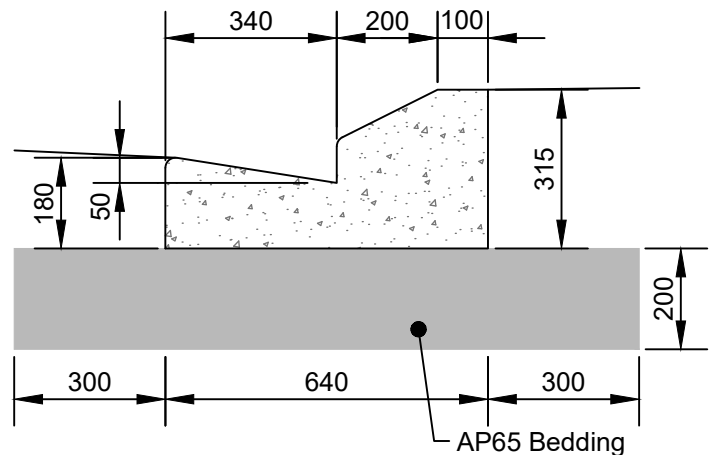
**HEAVY DUTY DISH CHANNEL**



**TRAFFIC ISLAND  
MOUNTABLE KERB**



**KERB ONLY**



**TRAFFIC ISLAND  
MOUNTABLE KERB AND CHANNEL**

**Notes**

1. All radii to be 20mm (min).
2. All concrete to be 20MPa (min) certified concrete to NZS 3104.
3. Clegg Impact Value of bedding to be 35 (min).
4. All Dish and Kerbs to be constructed with one pour.

Not to scale