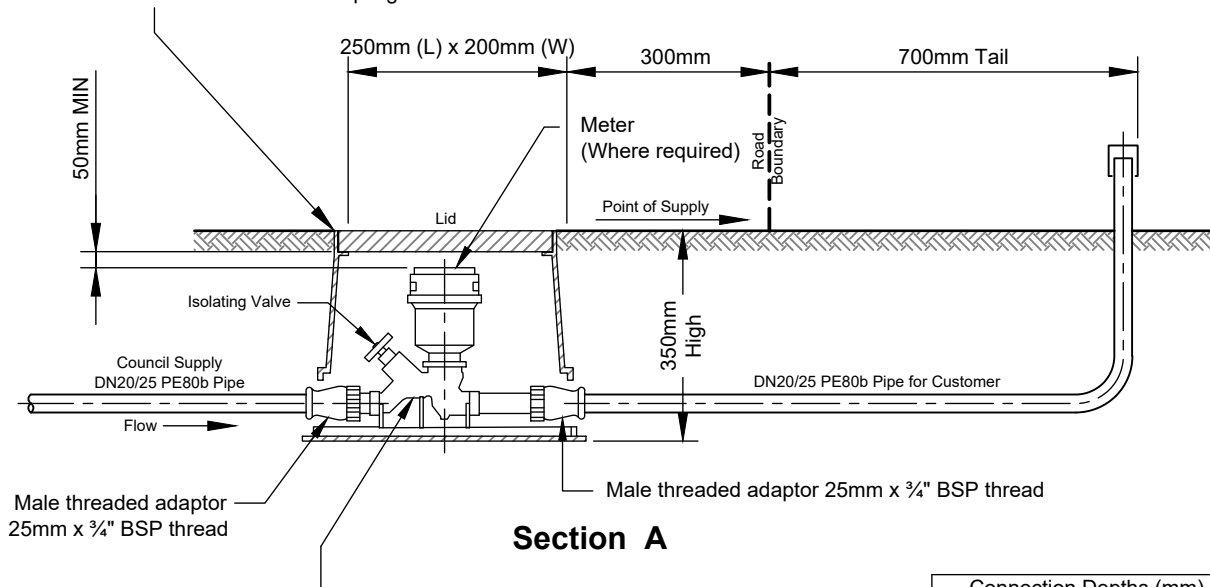


Moulded manifold box with base and mounting lugs with blue mounted lid (with 'WATER' moulded into top) and lid secured to surround via stainless steel flexible coupling



1. 20/25mm manifold assembly with dual check valve, female BSP 3/4" thread both ends (Acuflo) or similar approved by council
2. Kent water meter or similar approved by council

Connection Depths (mm)	
@ Boundary Line	300 to 375
@ Kerb Line	500
@ Road Surface	600

Not to scale