



## **Schedule of Pre-approved Sites for Food Trucks**

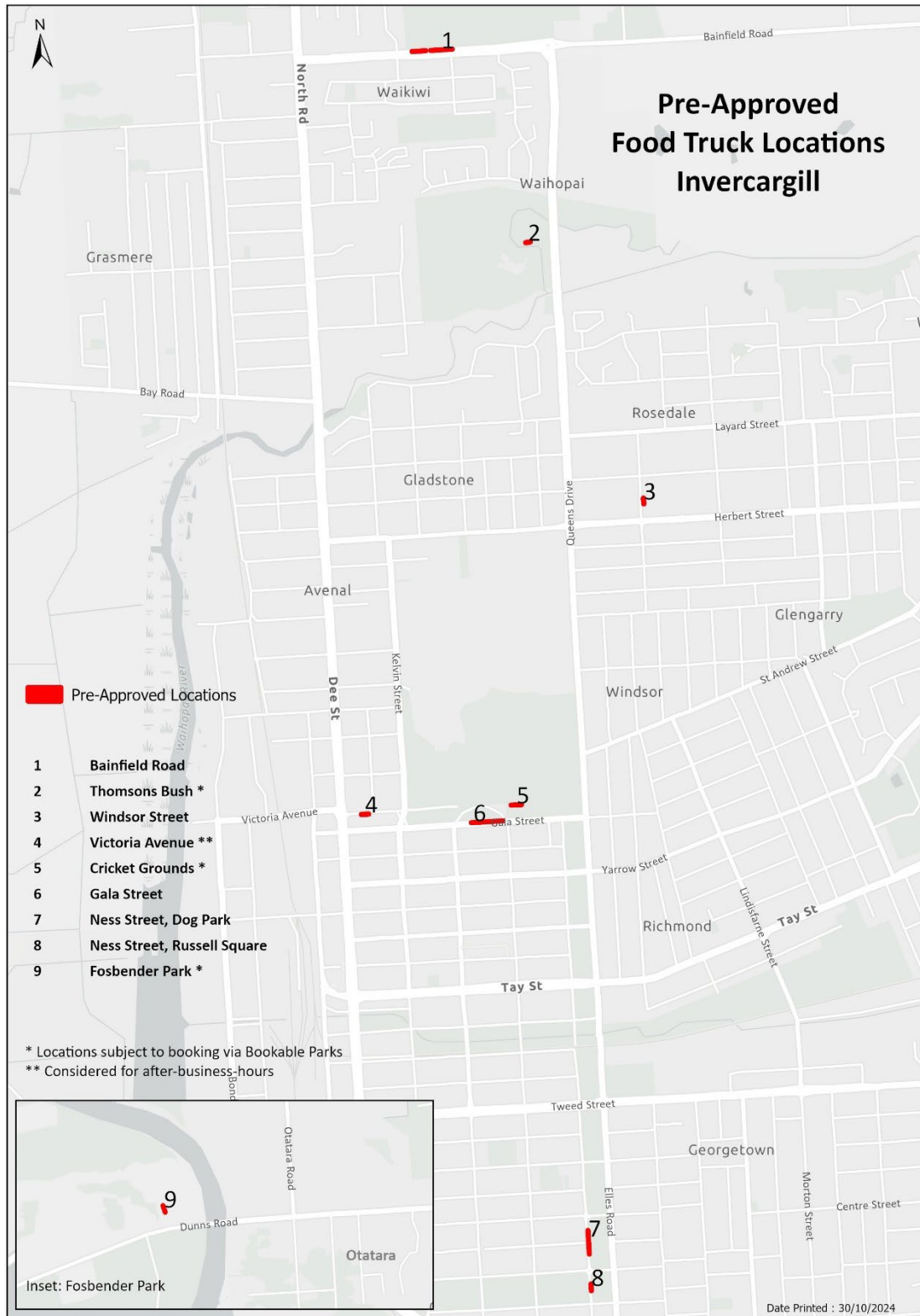
The following sites are as per the Environmental Health Bylaw 2024 Part 2 Mobile Trading clause 2.12.

## Table of Contents

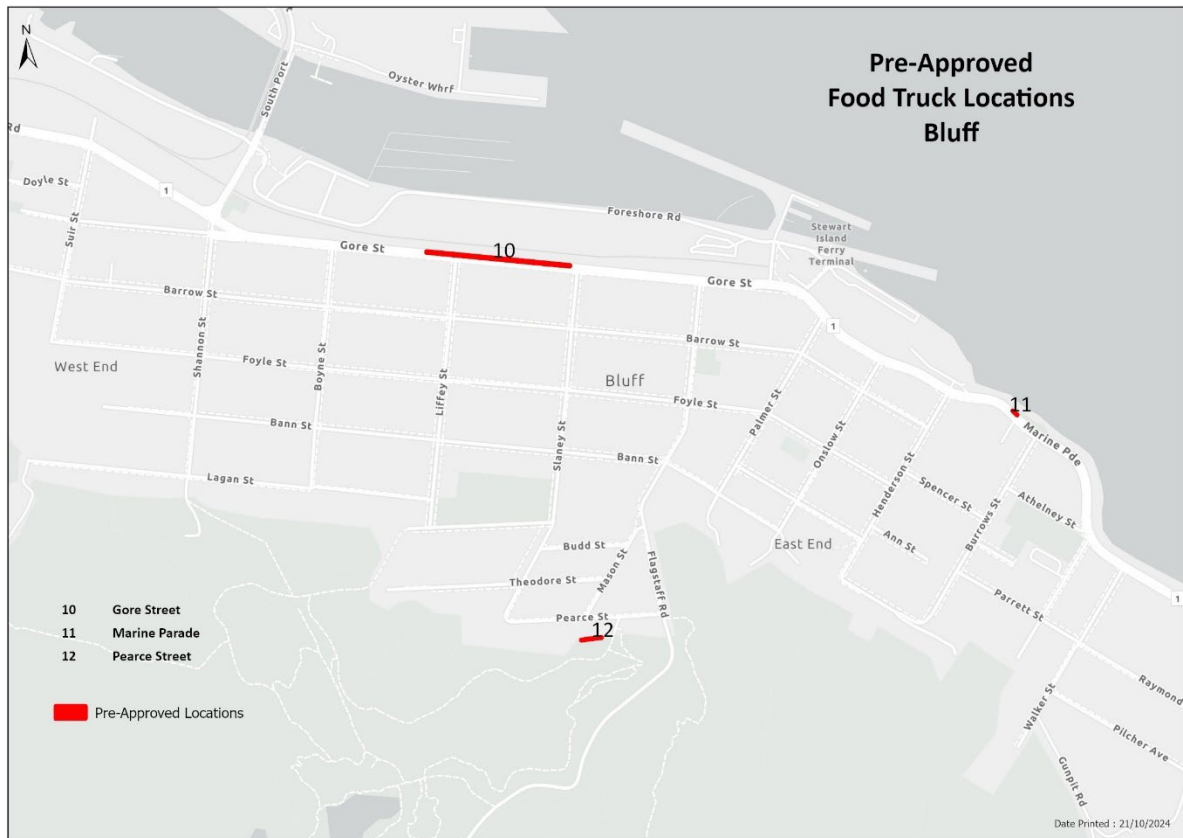
Map 1 and 2 showing locations within Invercragill, Otatara and Bluff. ....	3
Map 1: Invercargill and Otatara locations .....	3
Map 2: Bluff locations .....	4
The following maps show details relating to the pre-approved sites: .....	5
Invercargill .....	5
Otatara.....	13
Bluff .....	14

# Map 1 and 2 Showing Locations Within Invercargill, Otatara and Bluff.

## Map 1: Invercargill and Otatara Locations



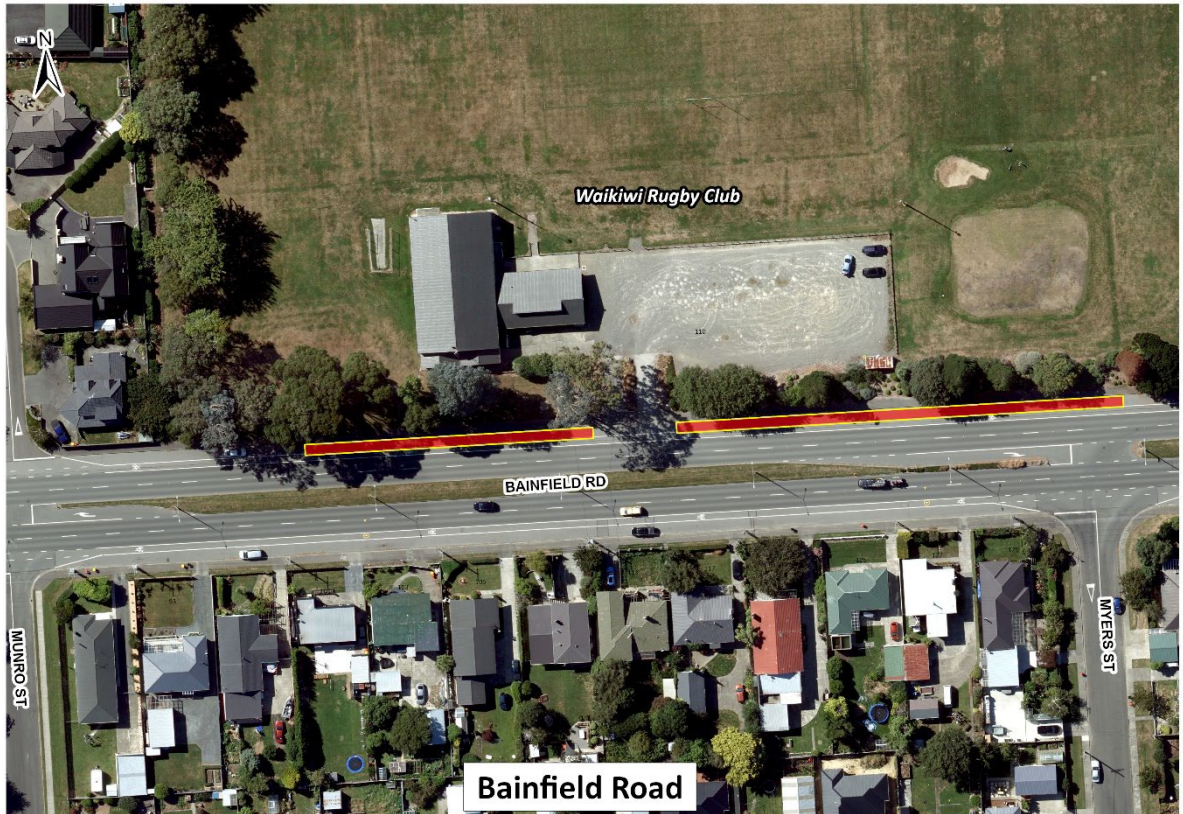
## Map 2: Bluff Locations



The following maps show details of each pre-approved site:

## Invercargill

1. Bainfield Road, outside Waikiwi Rugby Grounds, Invercargill



## 2. Thomsons Bush Car Park, Invercargill



This site is subject to booking via Bookable Parks - visit ICC webpage to book: <https://icc.bookable.co.nz> (fees and charges may apply).

### 3. Windsor Street, Invercargill



- i. Vehicles can be parked along the footpath parallel to the kerb, or angle parked, as appropriate; and,
- ii. Customers must be able to access the service area of the vehicle from the footpath.
- iii. Mobile traders operating during school hours must park in accordance with the marked angled parking spaces.

#### 4. Victoria Avenue, Invercargill



- i. This site can only be used for after-business hours trading.
- ii. Vehicles can be parked parallel to the kerb, or angle parked, as appropriate; and,
- iii. Customers must be able to access the service area of the vehicle from the Town Belt-Gala Street reserve side.



## 5. Cricket Grounds Parking, Gala Street Reserve, Invercargill



- i. This site is subject to booking via Bookable Parks - Visit ICC webpage to book: <https://icc.bookable.co.nz> (fees and charges may apply).
- ii. Vehicles must be parked on the parking lot and not on the grass.
- iii. Customers queuing for service must not obstruct the car park.

## 6. Gala Street, Invercargill



Customers must only access the service area of the vehicle from the Gala Street reserve side.

## 7. Ness Street, Dog Park, Invercargill



Customers must only access the service area of the vehicle from the reserve side.

## 8. Ness Street, Russell Square, Invercargill



Customers must only access the service area of the vehicle from the Russell Square reserve side.

## Otatara

### 9. Fosbender Park, Otatara



- i. This site is subject to booking via Bookable Parks - Visit ICC webpage to book: [https://icc.bookable.co.nz/fees and charges may apply](https://icc.bookable.co.nz/fees-and-charges-may-apply)
- ii. Vehicle parked on the grass area must not cause any damage to grass or trees.
- iii. Traders must check with ICC Bookings Team on +64 3 219 9070 or email [Parks.Recreation@icc.govt.nz](mailto:Parks.Recreation@icc.govt.nz) for a suitable alternate site in this area if the ground is too wet to park on grass.
- iv. Customers must be able to access the service window of the vehicle from grassed area.

## Bluff

### 10. Gore Street, Bluff



Customers must only access the service area of the vehicle from the reserve side.

## 11. Marine Parade, Bluff



Customers must only access the service area of the vehicle from the reserve side.

## 12. Pearce Street Car Park, Bluff



- i. The car parks cannot be booked for purpose of trading. The availability will be subject to demand for parking by the public.
- ii. Customers must be able to access the service window of the vehicle from the car park.